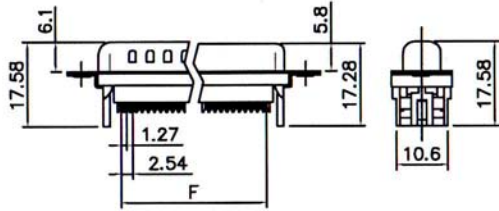
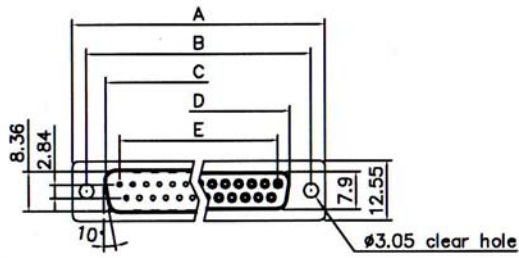
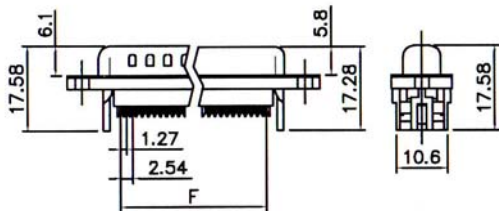


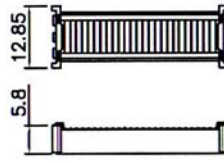
## D-SUB. CONNECTOR I.D.C. TYPE FOR FLAT CABLE ASSEMBLY



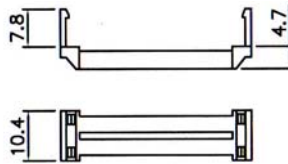
Without Insulator Support "0"



With Insulator Support "3" & "4"



Cover



Strain Relief

### SPECIFICATIONS

**Current Rating:** 3.0 Ampere  
**Contact Resistance:** 25mΩ Max.  
**Insulation Resistance:** 1000MΩ Min. at 500V  
**Dielectric Voltage:** 1000V at 1 Minute  
**Operating Temperature:** -55°C to +105°C

### MATERIALS

**Insulator:** PBT, UL94V-0 Rated  
**Contact:** Brass  
**Shell:** Brass, Steel  
**Contact Plating:** Gold Over Nickel Plated  
**Shell Plating:** Tin Over Copper Plated  
**\*RoHS & REACH compliant.**

No. of Contacts	Dimensions(mm)					
	A	B	C	D	E	F
09	30.81	24.99	16.92	16.33	11.08	10.16
15	39.14	33.32	25.50	24.66	19.39	17.78
25	53.04	47.04	38.96	38.38	33.24	30.48
37	69.32	63.50	55.42	54.84	49.86	45.72

### ORDERING INFORMATION:

P/N 5 2  $\frac{XX}{1}$  -  $\frac{XXXXX}{2}$   $\frac{3}{4}$   $\frac{5}{5}$

1. CONNECTOR TYPE:

"97" MALE  
 "98" FEMALE

2. NO. OF CONTACTS:

09, 15, 25, 37

3. SHELL TYPE:

"P" ALL PLASTIC TYPE  
 "M" METAL SHELL TYPE

4. INSULATOR COLOR:

"B" BLACK (STANDARD)  
 "U" BLUE

5. MOUNTING OPTION:

"0" Ø3.05MM THROUGH HOLES  
 "4" UNC4-40 THREADED INSERT  
 "3" M3 THREADED INSERT