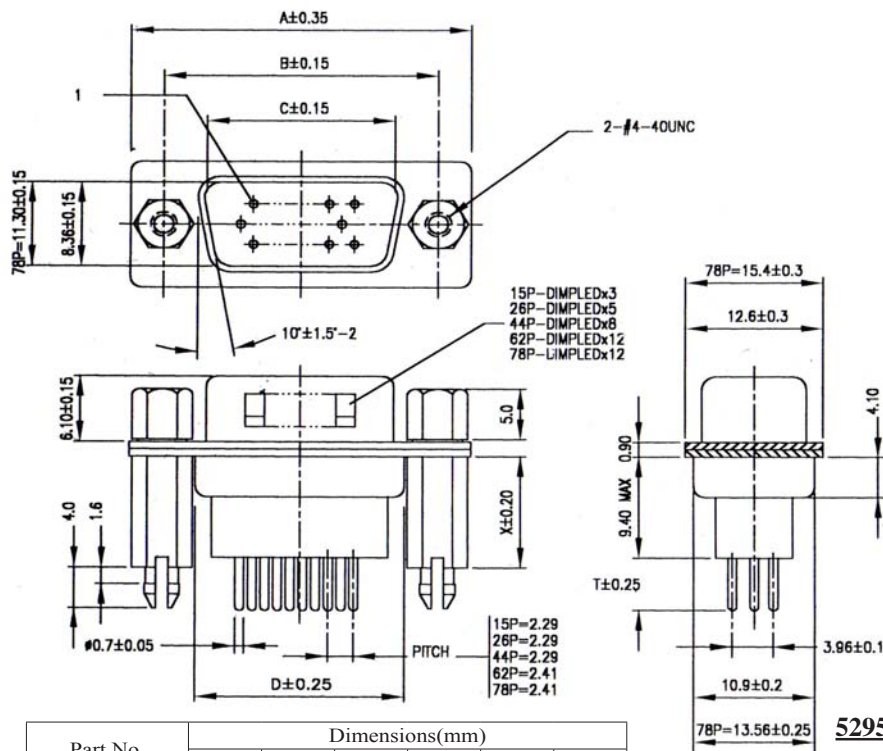


D-SUB. HIGH DENSITY MALE CONNECTOR WITH MACHINED PINS HIGH PROFILE STRAIGHT PCB MOUNT TYPE



SPECIFICATIONS

Current Rating: 5A
 Contact Resistance: 25mΩ Max.
 Insulation Resistance: 1000MΩ Min. at 500V
 Dielectric Voltage: 1000V at 1 Minute
 Operating Temperature: -55°C to +105°C

MATERIALS

Insulator: PBT, UL94V-0 Rated
 Contact: Brass
 Shell: Brass, Steel
 Contact Plating: Gold Over Nickel Plated
 Shell Plating: Tin Over Copper Plated
 *RoHS & REACH compliant.

Part No.	Dimensions(mm)					
	A	B	C	D	T	X
5295-15A/xx	30.80	24.99	16.92	19.20	3.60	9.60
5295-15B/xx	30.80	24.99	16.92	19.20	5.40	11.00
5295-15C/xx	30.80	24.99	16.92	19.20	7.20	12.70
5295-26A/xx	39.20	33.32	25.25	27.70	3.60	9.60
5295-26B/xx	39.20	33.32	25.25	27.70	5.40	11.00
5295-26C/xx	39.20	33.32	25.25	27.70	7.20	12.70
5295-44A/xx	53.00	47.04	38.95	41.10	3.60	9.60
5295-44B/xx	53.00	47.04	38.95	41.10	5.40	11.00
5295-44C/xx	53.00	47.04	38.95	41.10	7.20	12.70
5295-62A/xx	69.40	63.50	55.40	57.30	3.60	9.60
5295-62B/xx	69.40	63.50	55.40	57.30	5.40	11.00
5295-62C/xx	69.40	63.50	55.40	57.30	7.20	12.70
5295-78A/xx	67.00	61.10	52.80	55.10	3.60	9.60
5295-78B/xx	67.00	61.10	52.80	55.10	5.40	11.00
5295-78C/xx	67.00	61.10	52.80	55.10	7.20	12.70

5295-xxx/BRJ

ORDERING INFORMATION:

P/N 5 2 9 5 - $\frac{1}{2}$ $\frac{3}{3}$ / $\frac{4}{4}$

- CONNECTOR TYPE:
"95" MALE WITH MACHINED PINS
- NO. OF CONTACTS:
15, 26, 44, 62, 78
- PIN LENGTH & CONTACT TYPE:
"A" T= 3.6MM MACHINED PINS
"B" T= 5.4MM MACHINED PINS
"C" T= 7.2MM MACHINED PINS

- MOUNTING OPTION:
" " Ø3.05MM THROUGH HOLES
"BR" BOARD LOCK
"BRJ" BOARD LOCK & SCREW