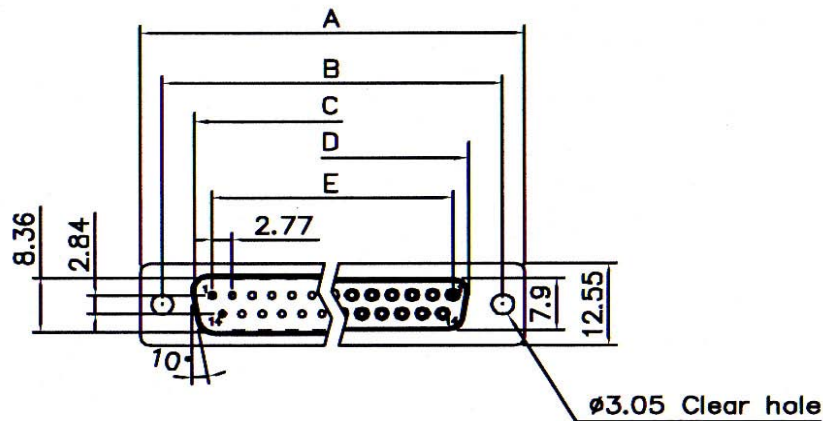


D-SUB. CONNECTORS STRAIGHT PCB TYPE WITHOUT METAL REAR SHELL

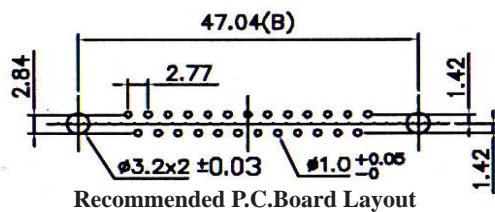
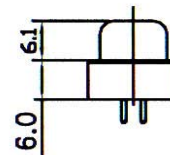
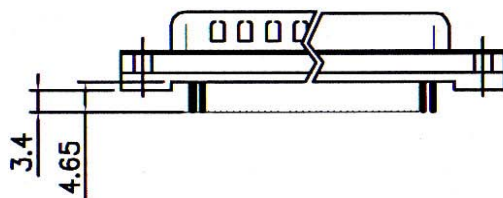


SPECIFICATIONS

Current Rating: 3.0 Amperes
Contact Resistance: 25mΩ Max.
Insulation Resistance: 1000MΩ Min. at 500V
Dielectric Voltage: 1000V at 1 Minute
Operating Temperature: -55°C to +105°C

MATERIALS

Insulator: PBT, UL94V-0 Rated
Contact: Brass
Shell: Brass, Steel
Contact Plating: Gold Over Nickel Plated
Shell Plating: Tin Over Copper Plated
 *RoHS & REACH compliant.



No. of Contacts	Dimensions(mm)				
	A	B	C	D	E
09	30.81	24.99	16.92	16.33	11.08
15	39.14	33.32	25.50	24.66	19.39
25	53.04	47.04	38.96	38.38	33.24
37	69.32	63.50	55.42	54.84	49.86

ORDERING INFORMATION:

P/N 5 1 $\frac{XX}{1}$ - $\frac{XX}{2}$ T $\frac{B}{3}$ / $\frac{XX}{4}$

- CONNECTOR TYPE:
 "35" MALE
 "36" FEMALE
- NO. OF CONTACTS:
 09, 15, 25, 37
- INSERT COLOR:
 "B" BLACK

- MOUNTING OPTION:
 " " Ø3.05MM THROUGH HOLES
 "J" FRONT RIVETED NUTS UNC4-40
 "JM3" FRONT RIVETED NUTS M3
 "BR" WITH BOARDLOCKS