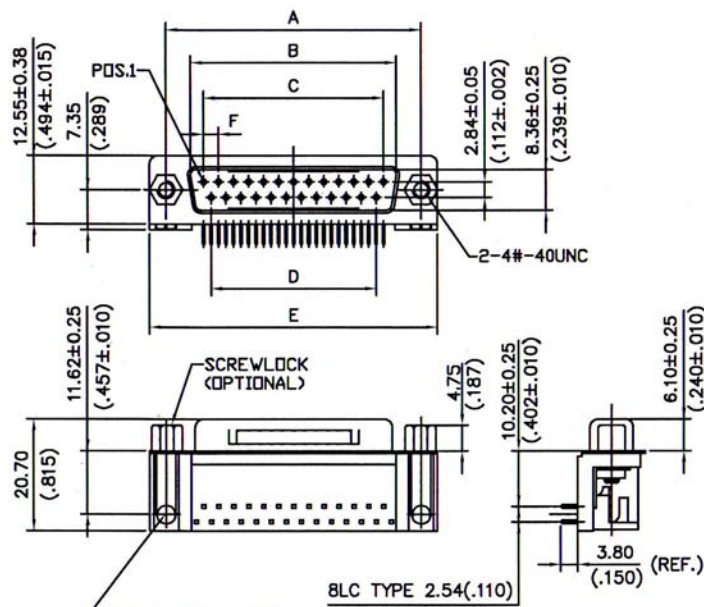
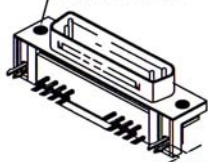


## EUROPEAN STANDARD D-SUB. MALE CONNECTOR RIGHT ANGLE TYPE (9.4MM)



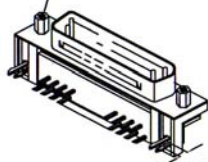
MOUNTING TYPE  
SEE 2 OF 2

4#-40UNC-2B  
THREADED  
RIVETED INSERT



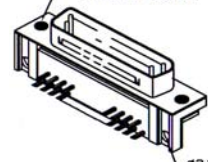
A MOUNTING TYPE

4#-40UNC  
JACK SCREW



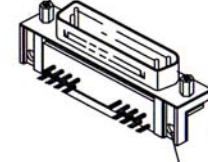
B MOUNTING TYPE

4#-40UNC-2B  
THREADED  
RIVETED INSERT

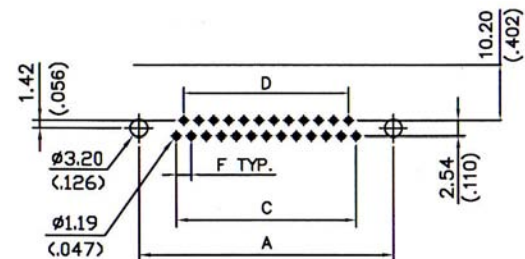


D MOUNTING TYPE

4#-40UNC  
JACK SCREW



F MOUNTING TYPE



Recommended P.C.Board Layout

### SPECIFICATIONS

**Current Rating:** 3.0 Amperes  
**Contact Resistance:** 25mΩ Max.  
**Insulation Resistance:** 1000MΩ Min. at 500V  
**Dielectric Voltage:** 1000V at 1 Minute  
**Operating Temperature:** -55°C to +105°C

### MATERIALS

**Insulator:** PBT, UL94V-0 Rated  
**Contact:** Brass  
**Shell:** Brass, Steel  
**Contact Plating:** Gold Over Nickel Plated  
**Shell Plating:** Tin Over Copper Plated  
**\*RoHS & REACH compliant.**

No. of Contacts	Dimensions(mm)					
	A±0.13	B±0.25	C±0.13	D±0.13	E±0.38	F±0.05
09	24.99	16.92	10.96	8.22	30.89	2.74
15	33.32	25.25	19.19	16.44	39.10	2.74
25	47.04	38.96	33.24	30.47	53.09	2.77
37	63.50	55.42	49.86	47.09	69.40	2.77

### ORDERING INFORMATION:

P/N 5271 -  $\frac{X}{I} \frac{X}{2}$

1. NO. OF CONTACTS:  
09, 15, 25, 37
2. MOUNTING TYPE:  
 "A" WITH BOARDLOCK GROUNDING  
 BRACKET & WITH UNC4-40  
 THREADED RIVETED INSERT  
 "B" WITH BOARDLOCK GROUNDING  
 BRACKET & SCREW LOCK  
 "D" WITH Ø3.2MM MOUNTING HOLE  
 & UNC4-40 THREADED  
 RIVETED INSERT  
 "F" WITH Ø3.2MM MOUNTING HOLE  
 & WITH SCREW LOCK

NOTE: THE SPECIFICATION CONFORMS  
 TO EUROPEAN STANDARD:

- \* CONTACT EXTENTION: 9.4MM
- \* CONTACT CENTER SPACING: 2.54MM