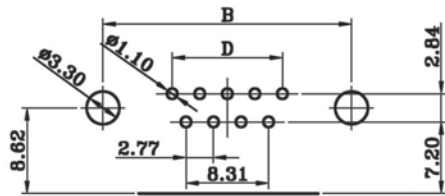
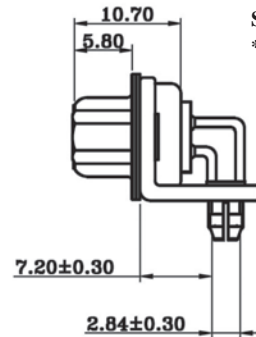
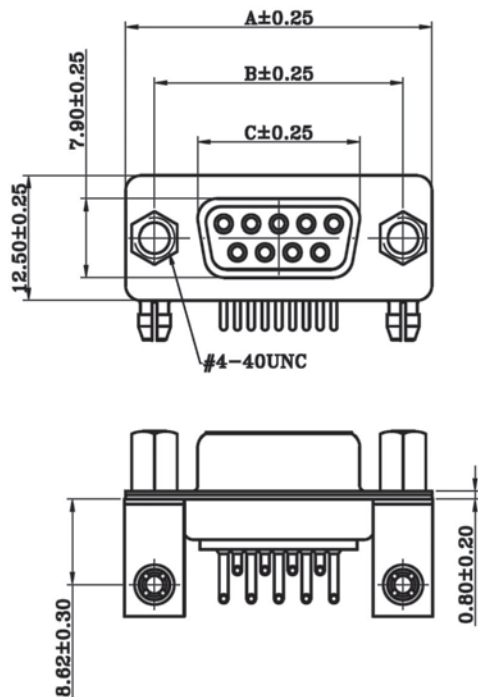


## D-SUB. 9, 15, 25, 37 PIN RIGHT ANGLE FEMALE CONNECTOR WITH MACHINED CONTACTS & METAL BRACKETS (7.2MM)



Recommended P.C.Board Layout



### SPECIFICATIONS

**Current Rating:** 5 Amp

**Contact Resistance:** 10MΩ Max.

**Dielectric Withstanding Voltage:** 1000V AC Min.

**Insulation Resistance:** 5GΩ Min.

**Operating Temperature:** -55°C to +125°C

### MATERIALS

**Shell:** Steel, Front Shell Tin Finished  
Back Shell Tin Finished

**Insulator:** PBT Thermoplastic, 30% Glass Filled, UL94V-0

**Single Contact:** Copper Alloy, Gold Flash  
\*RoHS & REACH compliant.

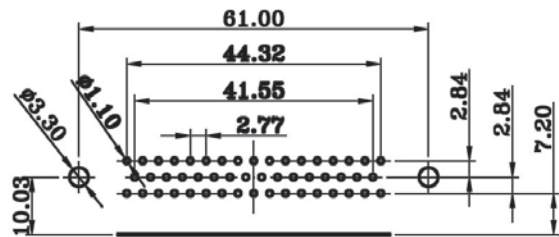
No. of Contacts	Dimensions(mm)			
	A	B	C	D
09	30.80	25.00	16.90	11.08
15	39.20	33.30	24.60	19.39
25	53.05	47.05	38.40	33.24
37	69.40	63.50	55.80	49.86

### ORDERING INFORMATION:

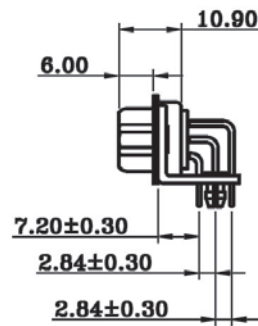
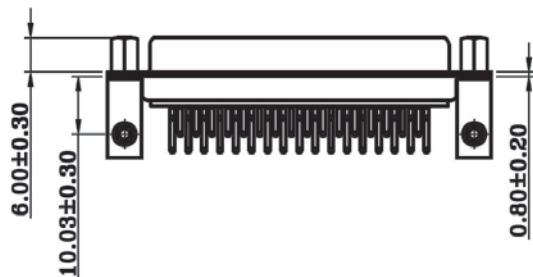
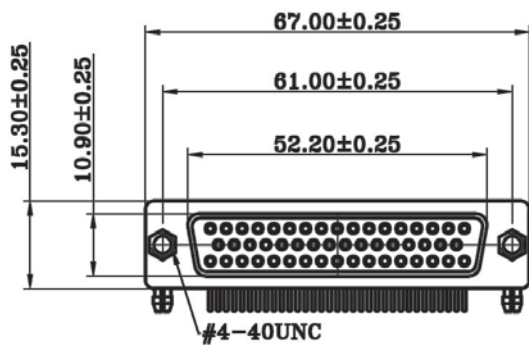
P/N 5 7 4 8 -  $\frac{x}{1}$   $\frac{x}{2}$   $\frac{T}{3}$   $\frac{x}{4}$  /  $\frac{R}{5}$  V

- CONNECTOR TYPE & FOOTPRINT:  
"48" FEMALE WITH FOOTPRINT=7.2MM
- NO. OF CONTACTS:  
09, 15, 25, 37
- SHELL FINISH:  
"T" FULL TIN PLATED
- INSULATOR COLOR:  
"B" BLACK  
"W" WHITE
- MOUNTING TYPE:  
"RV" METAL BRACKET #4-40 UNC WITH NUTS

## D-SUB. 50 PIN RIGHT ANGLE FEMALE CONNECTOR WITH MACHINED CONTACTS & METAL BRACKETS (7.2MM)



Recommended P.C.Board Layout



### SPECIFICATIONS

**Current Rating:** 5 Amp

**Contact Resistance:** 10MΩ Max.

**Dielectric Withstanding Voltage:** 1000V AC Min.

**Insulation Resistance:** 5GΩ Min.

**Operating Temperature:** -55°C to +125°C

### MATERIALS

**Shell:** Steel, Front Shell Tin Finished  
Back Shell Tin Finished

**Insulator:** PBT Thermoplastic, 30% Glass Filled, UL94V-0

**Single Contact:** Copper Alloy, Gold Flash  
\*RoHS & REACH compliant.

### ORDERING INFORMATION:

P/N 5 7 4 8 - 5 0 T X / R V

1. CONNECTOR TYPE & FOOTPRINT:  
"48" FEMALE WITH FOOTPRINT=7.2MM
2. NO. OF CONTACTS:  
50
3. SHELL FINISH:  
"T" FULL TIN PLATED
4. INSULATOR COLOR:  
"B" BLACK  
"W" WHITE
5. MOUNTING TYPE:  
"RV" METAL BRACKET #4-40 UNC  
WITH NUTS