

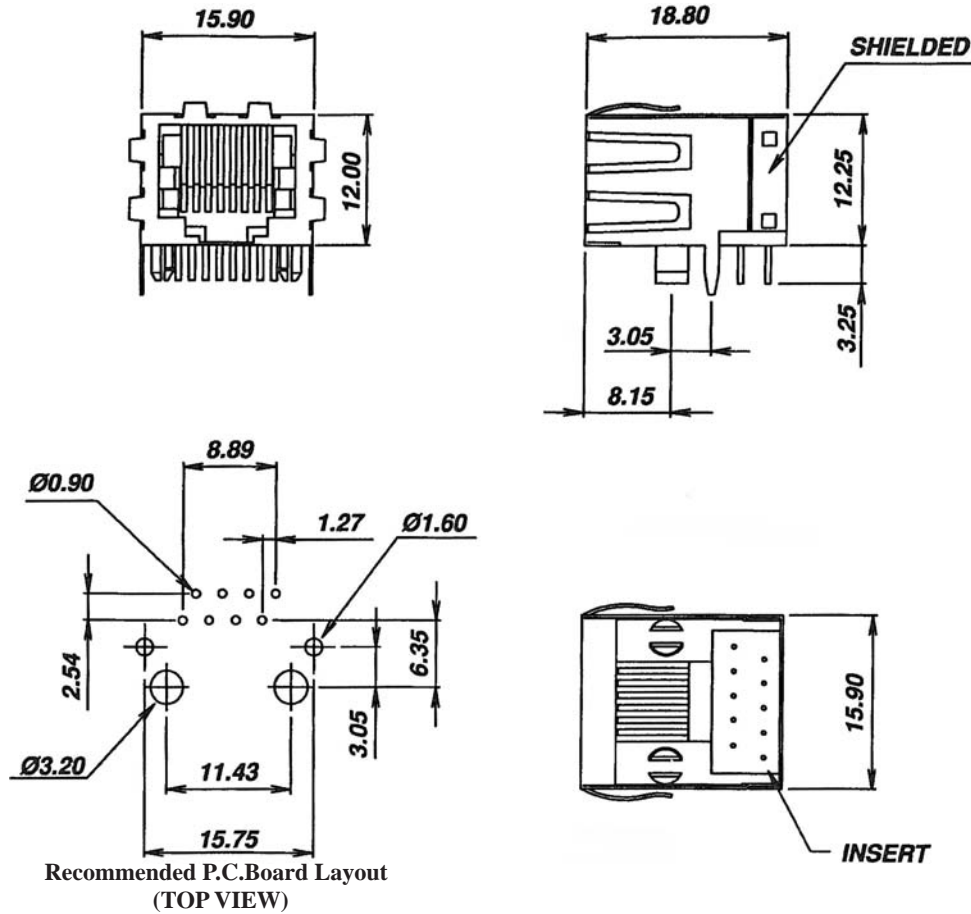
## SIDE ENTRY MODULAR PCB JACK 8P PROFILE=12.00MM (FULLY SHIELDED)

### SPECIFICATIONS

**Insulation Resistance:** 500M $\Omega$  Min.  
**Contact Resistance:** 20m $\Omega$  Max.  
**Rating Current:** 1.5A Max.  
**Rating Voltage:** 120V AC.  
**Dielectric Voltage:** 1000 Vrms 60 Sec. Min.  
**Temperature Range:** -40 $^{\circ}$ C / +85 $^{\circ}$ C  
**Durability:** 500 Mating cycles Min.

### MATERIALS

**Housing:** PBT Glass Filled (UL 94V-0)  
**Soldering Temperature:** 235 $^{\circ}$ C  
**Color:** Black  
**Spring Wire:** Phosphor Bronze  
                     Gold plating Over Nickel  
**Shield:** Brass plating Nickel Alloy  
**All materials must be RoHS compliant.**



### ORDERING INFORMATION:

P/N MJRY - 88 x B  
                    T 2

1. NO. OF POSITIONS & CONTACTS:  
"88" 8P8C
2. CONTACT FINISH:  
"A" 6 MICROINCH GOLD  
"B" 15 MICROINCH GOLD  
"C" 30 MICROINCH GOLD  
"D" 50 MICROINCH GOLD

NOTE: P/N MJRYHT-88xB for High Temp. Version