

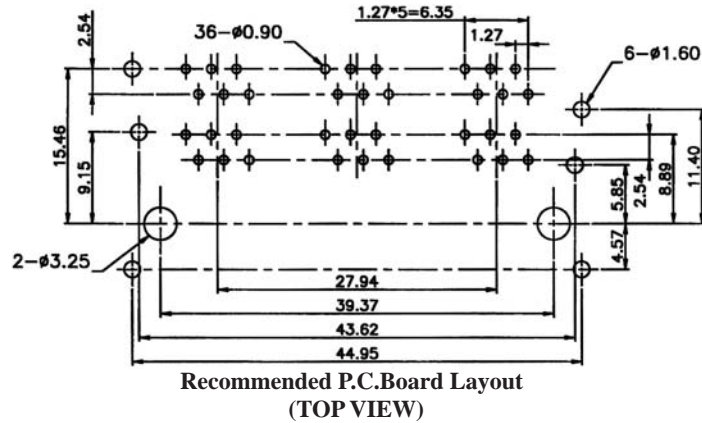
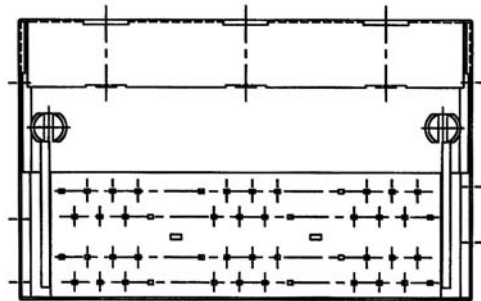
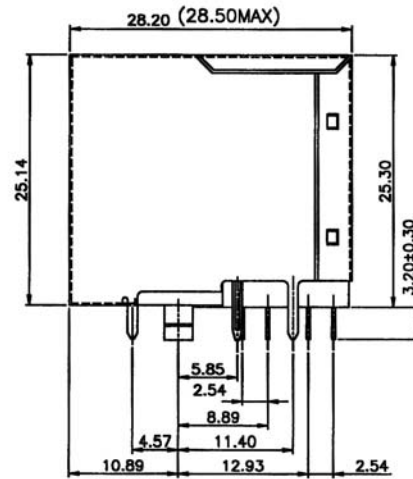
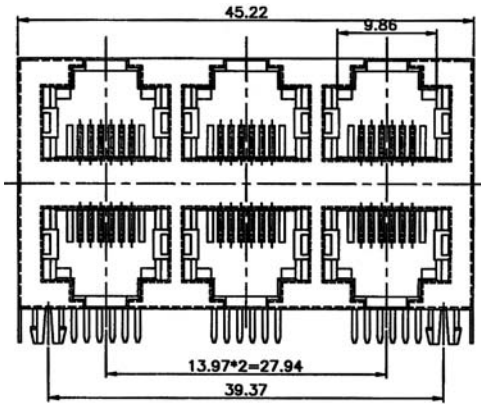
## SIDE ENTRY 6-PORT DOUBLE LEVEL MODULAR PCB JACK 6P PROFILE=25.30MM (FULLY SHIELDED)

### SPECIFICATIONS

**Insulation Resistance:** 500MΩ Min.  
**Contact Resistance:** 20mΩ Max.  
**Rating Current:** 1.5A Max.  
**Rating Voltage:** 120V AC.  
**Dielectric Voltage:** 1000 Vrms 60 Sec. Min.  
**Temperature Range:** -40°C / +85°C  
**Durability:** 500 Mating cycles Min.

### MATERIALS

**Housing:** PBT Glass Filled (UL 94V-0)  
**Soldering Temperature:** 235°C  
**Color:** Black  
**Spring Wire:** Phosphor Bronze  
                     Gold plating Over Nickel  
**Shield:** Brass plating Nickel Alloy  
**All materials must be RoHS compliant.**



### ORDERING INFORMATION:

P/N M J A 2 -  $\frac{x}{1}$   $\frac{x}{2}$   $\frac{x}{3}$  B 0 6

1. NO. OF POSITIONS & CONTACTS:  
 "66" 6P6C  
 "64" 6P4C
2. CONTACT FINISH:  
 "A" 6 MICROINCH GOLD  
 "B" 15 MICROINCH GOLD  
 "C" 30 MICROINCH GOLD  
 "D" 50 MICROINCH GOLD
3. NO. OF PORTS:  
 06

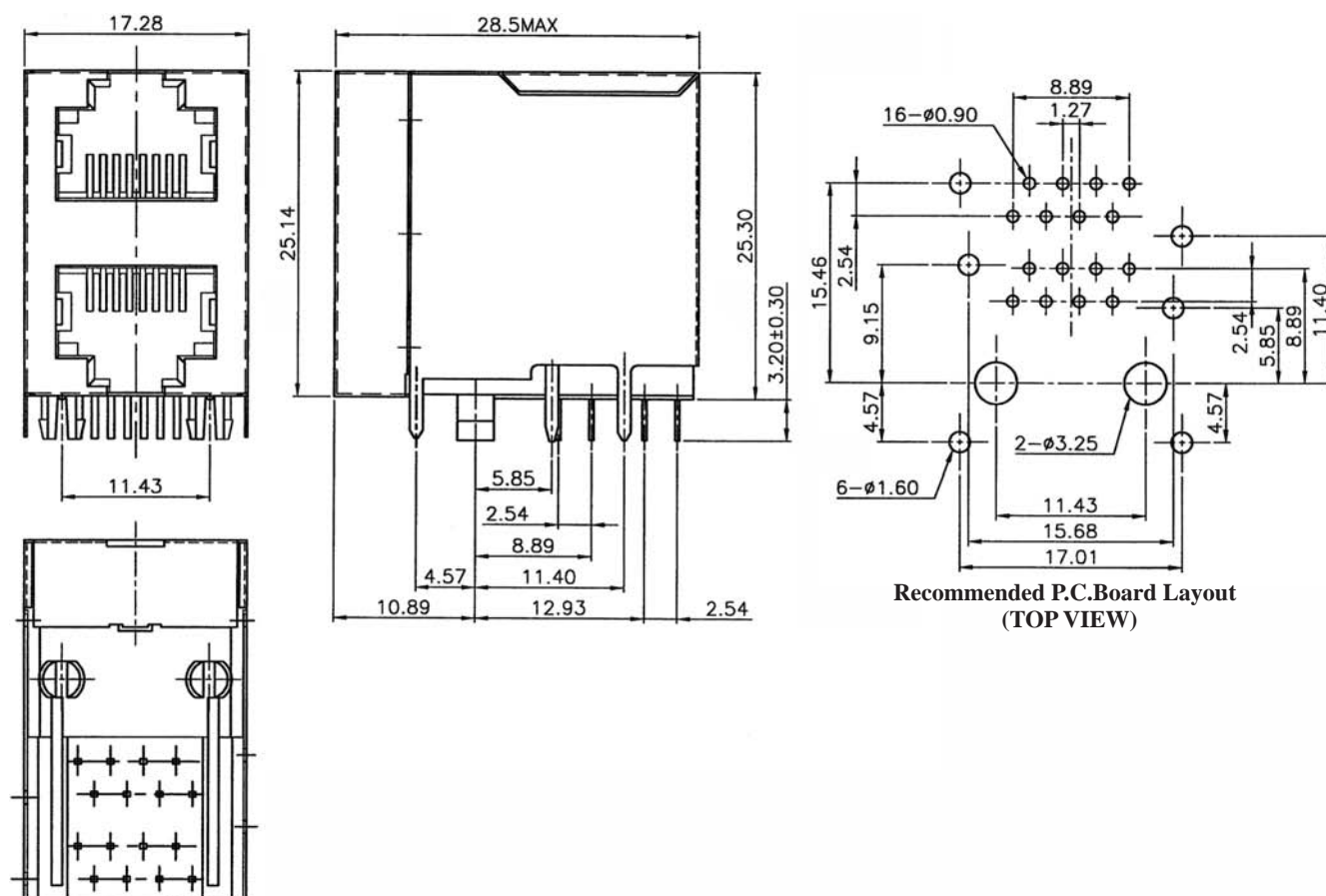
## SIDE ENTRY 2-PORT DOUBLE LEVEL MODULAR PCB JACK 8P PROFILE=25.30MM (FULLY SHIELDED)

### SPECIFICATIONS

**Insulation Resistance:** 500MΩ Min.  
**Contact Resistance:** 20mΩ Max.  
**Rating Current:** 1.5A Max.  
**Rating Voltage:** 120V AC.  
**Dielectric Voltage:** 1000 Vrms 60 Sec. Min.  
**Temperature Range:** -40°C / +85°C  
**Durability:** 500 Mating cycles Min.

### MATERIALS

**Housing:** PBT Glass Filled (UL 94V-0)  
**Soldering Temperature:** 235°C  
**Color:** Black  
**Spring Wire:** Phosphor Bronze  
                     Gold plating Over Nickel  
**Shield:** Brass plating Nickel Alloy  
**All materials must be RoHS compliant.**



### ORDERING INFORMATION:

P/N MJ  $\frac{x}{1}$   $\frac{x}{2}$  - 88  $\frac{x}{3}$  B  $\frac{0}{4}$

- CATEGORY TYPE:  
 "A2" CAT. 3  
 "59" CAT. 5
- NO. OF POSITIONS & CONTACTS:  
 "88" 8P8C
- CONTACT FINISH:  
 "A" 6 MICROINCH GOLD  
 "B" 15 MICROINCH GOLD  
 "C" 30 MICROINCH GOLD  
 "D" 50 MICROINCH GOLD
- NO. OF PORTS:  
 02

NOTE: FOR CAT. 5 ONLY MJ59-88CB02 AVAILABLE

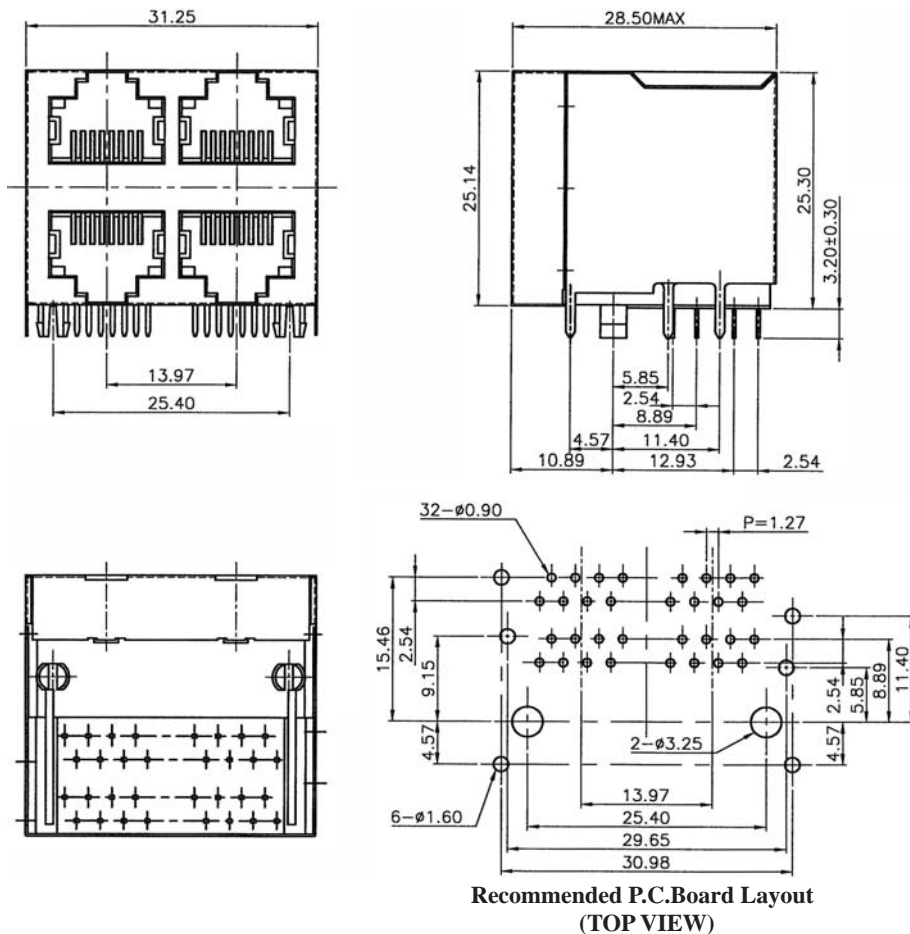
## SIDE ENTRY 4-PORT DOUBLE LEVEL MODULAR PCB JACK 8P PROFILE=25.30MM (FULLY SHIELDED)

### SPECIFICATIONS

**Insulation Resistance:** 500MΩ Min.  
**Contact Resistance:** 20mΩ Max.  
**Rating Current:** 1.5A Max.  
**Rating Voltage:** 120V AC.  
**Dielectric Voltage:** 1000 Vrms 60 Sec. Min.  
**Temperature Range:** -40°C / +85°C  
**Durability:** 500 Mating cycles Min.

### MATERIALS

**Housing:** PBT Glass Filled (UL 94V-0)  
**Soldering Temperature:** 235°C  
**Color:** Black  
**Spring Wire:** Phosphor Bronze  
                     Gold plating Over Nickel  
**Shield:** Brass plating Nickel Alloy  
**All materials must be RoHS compliant.**



Recommended P.C.Board Layout (TOP VIEW)

### ORDERING INFORMATION:

P/N MJ  $\frac{xx}{1}$  - 88  $\frac{x}{2}$  B  $\frac{04}{4}$

- CATEGORY TYPE:  
 "A2" CAT. 3  
 "59" CAT. 5
- NO. OF POSITIONS & CONTACTS:  
 "88" 8P8C
- CONTACT FINISH:  
 "A" 6 MICROINCH GOLD  
 "B" 15 MICROINCH GOLD  
 "C" 30 MICROINCH GOLD  
 "D" 50 MICROINCH GOLD
- NO. OF PORTS:  
 04

NOTE: FOR CAT. 5 ONLY MJ59-88CB04 AVAILABLE

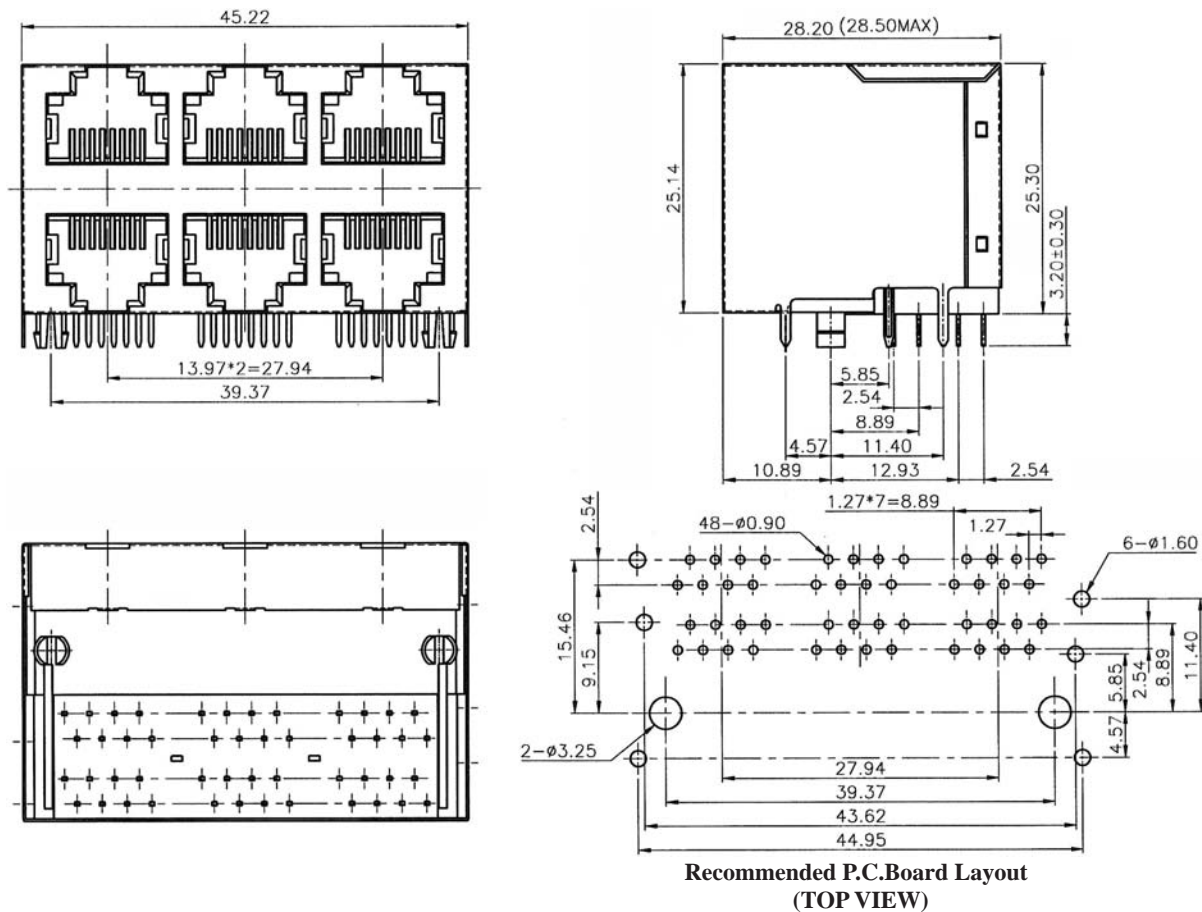
## SIDE ENTRY 6-PORT DOUBLE LEVEL MODULAR PCB JACK 8P PROFILE=25.30MM (FULLY SHIELDED)

### SPECIFICATIONS

**Insulation Resistance:** 500MΩ Min.  
**Contact Resistance:** 20mΩ Max.  
**Rating Current:** 1.5A Max.  
**Rating Voltage:** 120V AC.  
**Dielectric Voltage:** 1000 Vrms 60 Sec. Min.  
**Temperature Range:** -40°C / +85°C  
**Durability:** 500 Mating cycles Min.

### MATERIALS

**Housing:** PBT Glass Filled (UL 94V-0)  
**Soldering Temperature:** 235°C  
**Color:** Black  
**Spring Wire:** Phosphor Bronze  
                   Gold plating Over Nickel  
**Shield:** Brass plating Nickel Alloy  
**All materials must be RoHS compliant.**



### ORDERING INFORMATION:

P/N MJ  $\frac{x}{1}$  -  $\frac{88}{2}$   $\frac{x}{3}$  B  $\frac{06}{4}$

- CATEGORY TYPE:  
 "A2" CAT. 3  
 "59" CAT. 5
- NO. OF POSITIONS & CONTACTS:  
 "88" 8P8C
- CONTACT FINISH:  
 "A" 6 MICROINCH GOLD  
 "B" 15 MICROINCH GOLD  
 "C" 30 MICROINCH GOLD  
 "D" 50 MICROINCH GOLD
- NO. OF PORTS:  
 06

NOTE: FOR CAT. 5 ONLY MJ59-88CB06 AVAILABLE

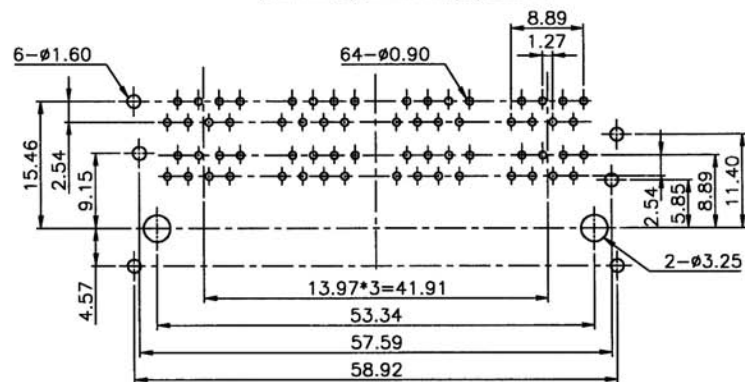
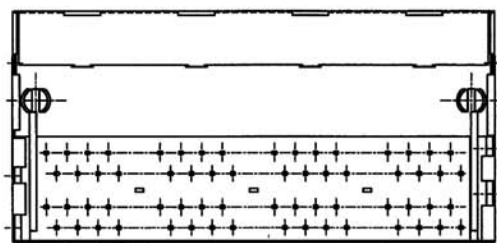
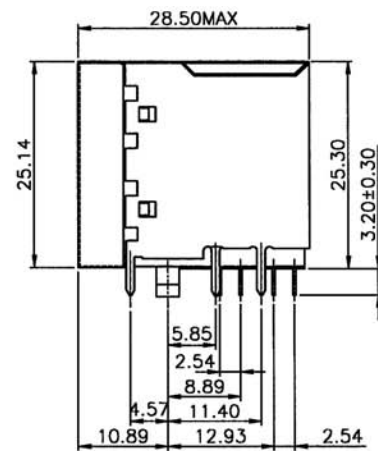
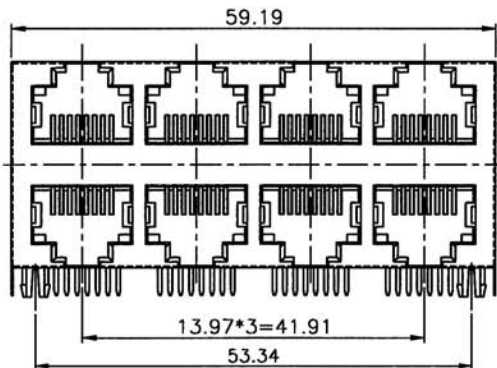
## SIDE ENTRY 8-PORT DOUBLE LEVEL MODULAR PCB JACK 8P PROFILE=25.30MM (FULLY SHIELDED)

### SPECIFICATIONS

**Insulation Resistance:** 500MΩ Min.  
**Contact Resistance:** 20mΩ Max.  
**Rating Current:** 1.5A Max.  
**Rating Voltage:** 120V AC.  
**Dielectric Voltage:** 1000 Vrms 60 Sec. Min.  
**Temperature Range:** -40°C / +85°C  
**Durability:** 500 Mating cycles Min.

### MATERIALS

**Housing:** PBT Glass Filled (UL 94V-0)  
**Soldering Temperature:** 235°C  
**Color:** Black  
**Spring Wire:** Phosphor Bronze  
                   Gold plating Over Nickel  
**Shield:** Brass plating Nickel Alloy  
**All materials must be RoHS compliant.**



Recommended P.C. Board Layout  
(TOP VIEW)

### ORDERING INFORMATION:

P/N MJ  $\frac{x}{1}$   $\frac{x}{2}$  - 88  $\frac{x}{3}$  B  $\frac{0}{4}$

1. CATEGORY TYPE:  
"A2" CAT. 3  
"59" CAT. 5
2. NO. OF POSITIONS & CONTACTS:  
"88" 8P8C
3. CONTACT FINISH:  
"A" 6 MICROINCH GOLD  
"B" 15 MICROINCH GOLD  
"C" 30 MICROINCH GOLD  
"D" 50 MICROINCH GOLD
4. NO. OF PORTS:  
08

NOTE: FOR CAT. 5 ONLY MJ59-88CB08 AVAILABLE



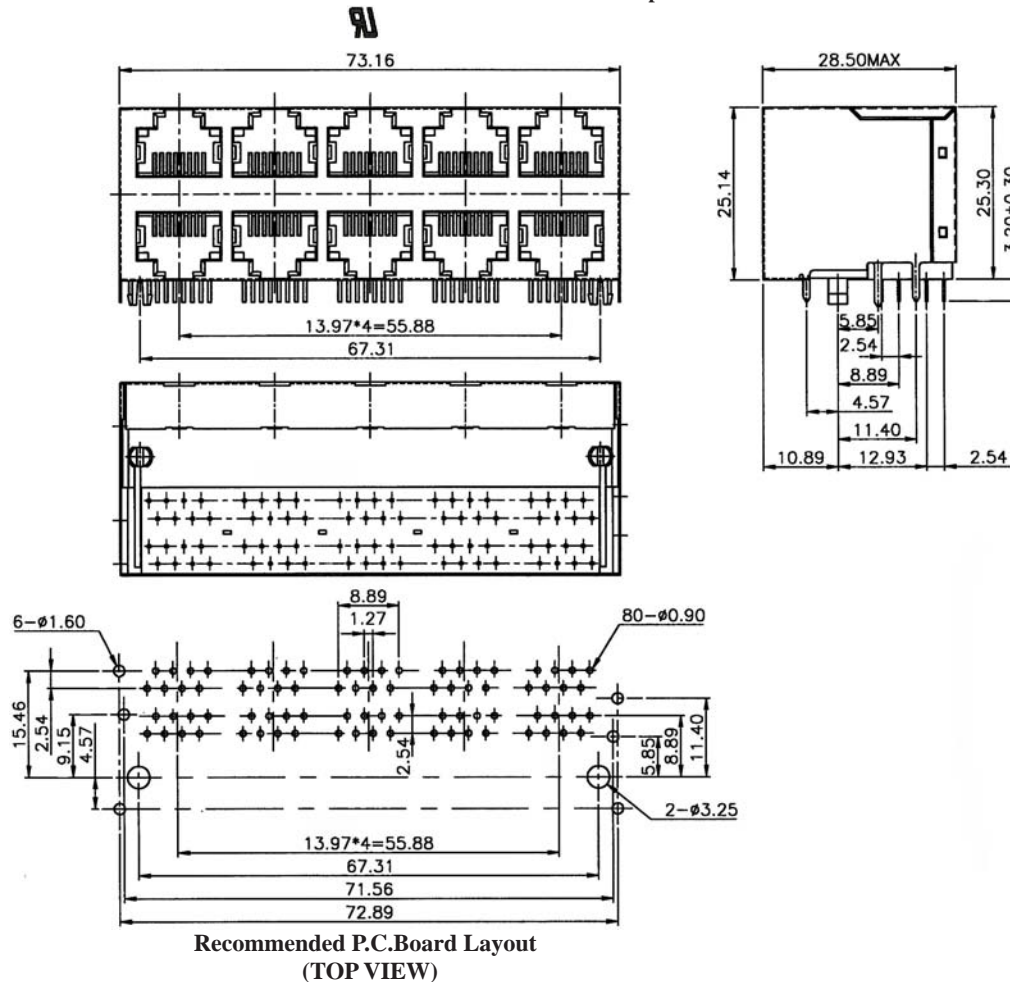
## SIDE ENTRY 10-PORT DOUBLE LEVEL MODULAR PCB JACK 8P PROFILE=25.30MM (FULLY SHIELDED)

### SPECIFICATIONS

**Insulation Resistance:** 500MΩ Min.  
**Contact Resistance:** 20mΩ Max.  
**Rating Current:** 1.5A Max.  
**Rating Voltage:** 120V AC.  
**Dielectric Voltage:** 1000 Vrms 60 Sec. Min.  
**Temperature Range:** -40°C / +85°C  
**Durability:** 500 Mating cycles Min.

### MATERIALS

**Housing:** PBT Glass Filled (UL 94V-0)  
**Soldering Temperature:** 235°C  
**Color:** Black  
**Spring Wire:** Phosphor Bronze  
                     Gold plating Over Nickel  
**Shield:** Brass plating Nickel Alloy  
**All materials must be RoHS compliant.**



### ORDERING INFORMATION:

P/N MJ  $\frac{x}{1}$  -  $\frac{88}{2}$   $\frac{x}{3}$  B  $\frac{10}{4}$

1. CATEGORY TYPE:  
 "A2" CAT. 3  
 "59" CAT. 5
2. NO. OF POSITIONS & CONTACTS:  
 "88" 8P8C
3. CONTACT FINISH:  
 "A" 6 MICROINCH GOLD  
 "B" 15 MICROINCH GOLD  
 "C" 30 MICROINCH GOLD  
 "D" 50 MICROINCH GOLD
4. NO. OF PORTS:  
 10

NOTE: FOR CAT. 5 ONLY MJ59-88CB10 AVAILABLE

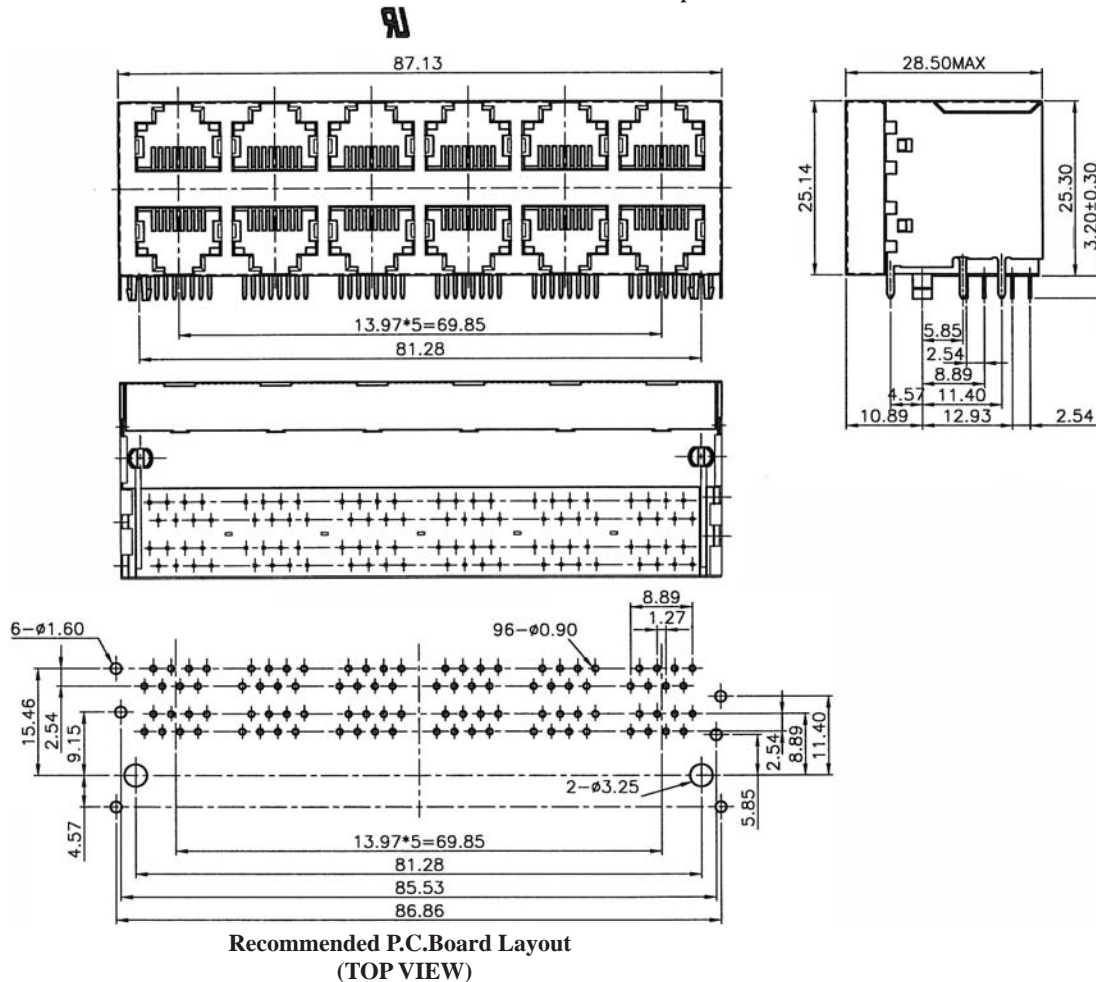
## SIDE ENTRY 12-PORT DOUBLE LEVEL MODULAR PCB JACK 8P PROFILE=25.30MM (FULLY SHIELDED)

### SPECIFICATIONS

**Insulation Resistance:** 500MΩ Min.  
**Contact Resistance:** 20mΩ Max.  
**Rating Current:** 1.5A Max.  
**Rating Voltage:** 120V AC.  
**Dielectric Voltage:** 1000 Vrms 60 Sec. Min.  
**Temperature Range:** -40°C / +85°C  
**Durability:** 500 Mating cycles Min.

### MATERIALS

**Housing:** PBT Glass Filled (UL 94V-0)  
**Soldering Temperature:** 235°C  
**Color:** Black  
**Spring Wire:** Phosphor Bronze  
                     Gold plating Over Nickel  
**Shield:** Brass plating Nickel Alloy  
**All materials must be RoHS compliant.**



### ORDERING INFORMATION:

P/N MJ  $\frac{x}{1}$  - 88  $\frac{x}{2}$  B  $\frac{1}{3}$   $\frac{2}{4}$

- CATEGORY TYPE:  
 "A2" CAT. 3  
 "59" CAT. 5
- NO. OF POSITIONS & CONTACTS:  
 "88" 8P8C
- CONTACT FINISH:  
 "A" 6 MICROINCH GOLD  
 "B" 15 MICROINCH GOLD  
 "C" 30 MICROINCH GOLD  
 "D" 50 MICROINCH GOLD
- NO. OF PORTS:  
 12

NOTE: FOR CAT. 5 ONLY MJ59-88CB12 AVAILABLE

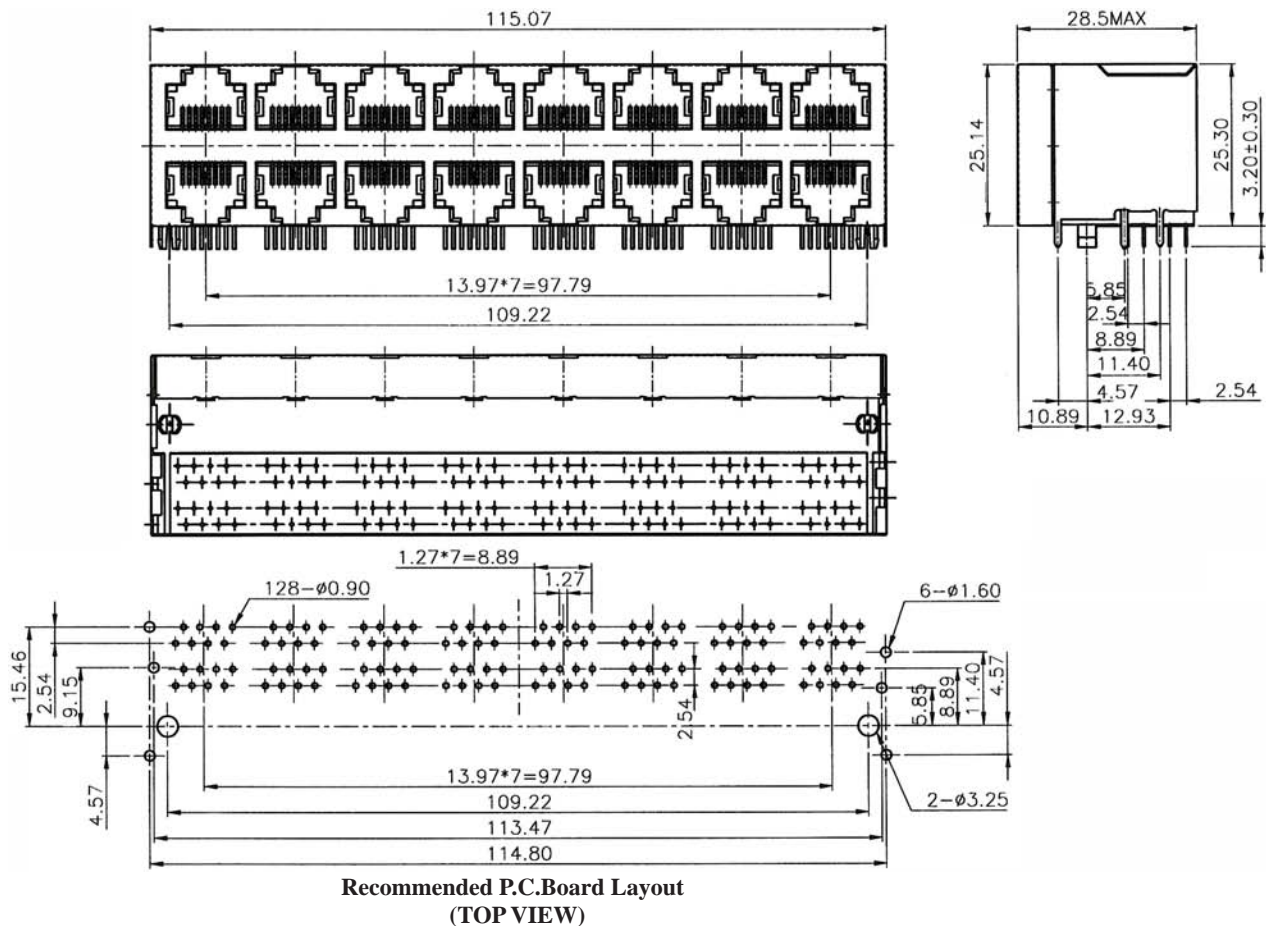
## SIDE ENTRY 16-PORT DOUBLE LEVEL MODULAR PCB JACK 8P PROFILE=25.30MM (FULLY SHIELDED)

### SPECIFICATIONS

**Insulation Resistance:** 500MΩ Min.  
**Contact Resistance:** 20mΩ Max.  
**Rating Current:** 1.5A Max.  
**Rating Voltage:** 120V AC.  
**Dielectric Voltage:** 1000 Vrms 60 Sec. Min.  
**Temperature Range:** -40°C / +85°C  
**Durability:** 500 Mating cycles Min.

### MATERIALS

**Housing:** PBT Glass Filled (UL 94V-0)  
**Soldering Temperature:** 235°C  
**Color:** Black  
**Spring Wire:** Phosphor Bronze  
                     Gold plating Over Nickel  
**Shield:** Brass plating Nickel Alloy  
**All materials must be RoHS compliant.**



### ORDERING INFORMATION:

P/N MJ  $\frac{x}{1}$  -  $\frac{88}{2}$   $\frac{x}{3}$  B  $\frac{16}{4}$

1. CATEGORY TYPE:  
"A2" CAT. 3  
"59" CAT. 5
2. NO. OF POSITIONS & CONTACTS:  
"88" 8P8C
3. CONTACT FINISH:  
"A" 6 MICROINCH GOLD  
"B" 15 MICROINCH GOLD  
"C" 30 MICROINCH GOLD  
"D" 50 MICROINCH GOLD
4. NO. OF PORTS:  
16

NOTE: FOR CAT. 5 ONLY MJ59-88CB16 AVAILABLE