

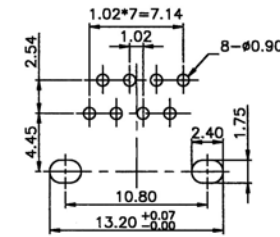
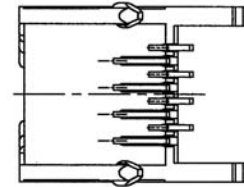
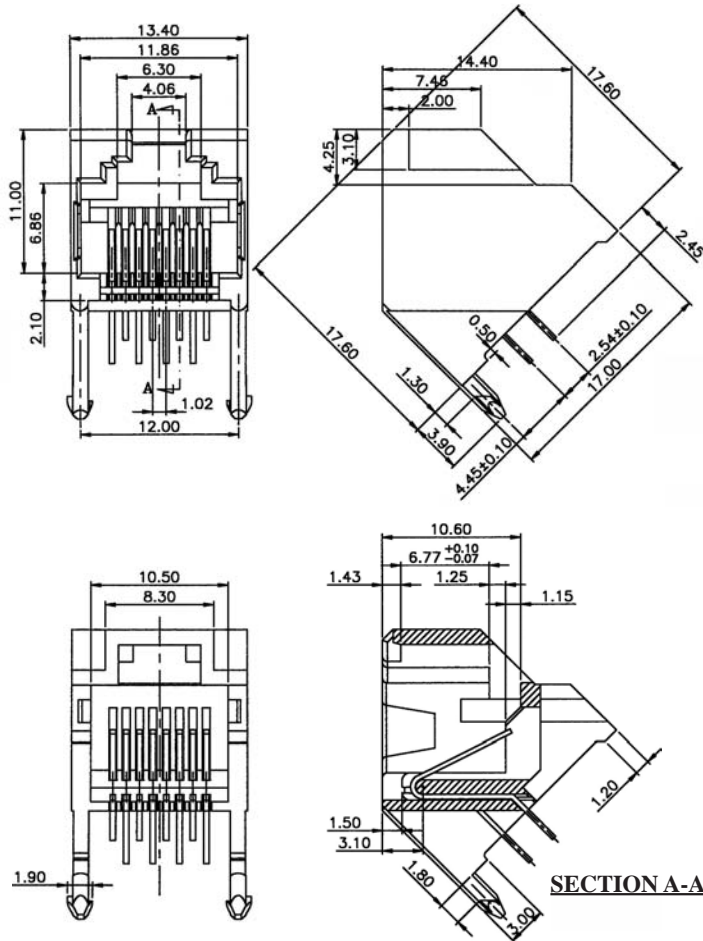
MINI 45 DEGREE ENTRY MODULAR PCB JACK 8P (UNSHIELDED)

SPECIFICATIONS

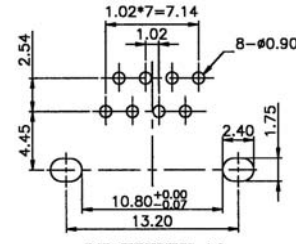
Insulation Resistance: 500MΩ Min.
Contact Resistance: 20mΩ Max.
Rating Current: 1.5A Max.
Rating Voltage: 120V AC.
Dielectric Voltage: 1000 Vrms 60 Sec. Min.
Temperature Range: -40°C / +85°C
Durability: 500 Mating cycles Min.

MATERIALS

Housing: PBT Glass Filled (UL 94V-0)
Soldering Temperature: 235°C
Color: White
Spring Wire: Phosphor Bronze
 Gold plating Over Nickel
All materials must be RoHS compliant.



PCB THICKNESS=1.0
Recommended P.C.Board Layout
(TOP VIEW)



PCB THICKNESS=1.6
Recommended P.C.Board Layout
(TOP VIEW)

ORDERING INFORMATION:

P/N M J 2 M - $\frac{x \ x \ x \ W}{1 \ 2 \ 3}$

- NO. OF POSITIONS & CONTACTS:
 "88" 8P8C
 "84" 8P4C
- CONTACT FINISH:
 "A" 6 MICROINCH GOLD
 "B" 15 MICROINCH GOLD
 "C" 30 MICROINCH GOLD
 "D" 50 MICROINCH GOLD
- HOUSING COLOR:
 "W" WHITE