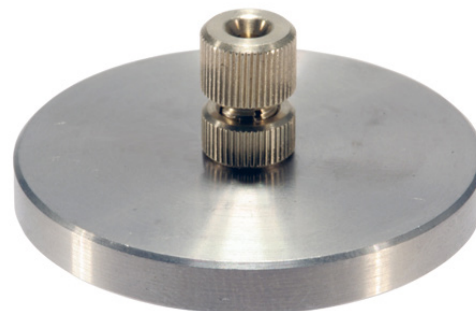


Polishing Jig for Fiber End Sleeves POF Cable 1/2.2mm

1 General

Assembled Plastic Optical Fibers have to be polished to achieve optimal attenuation values. The fibers are polished until the fiber end face is flush with the assembled connector. A hard and plain support plate (e. g. glass plate), an abrasive and a polishing jig is used for an appropriate fiber end face treatment. This polishing jig is suitable for 1/2.2mm Standard POF cables acc. IEC60793-2-40 Cat. A4a & A4d terminated with POF fiber end sleeves.



Pic. 1 Polishing jig

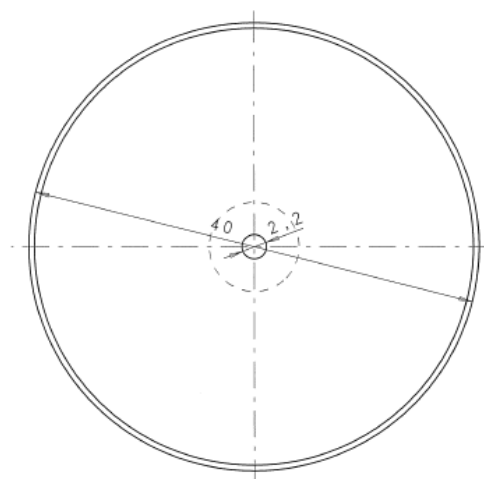
2 Ordering Information

Type	Order number
Polishing jig for POF 1/2.2mm with fiber end sleeves	910PSR1500001

5 Dimensioned drawing

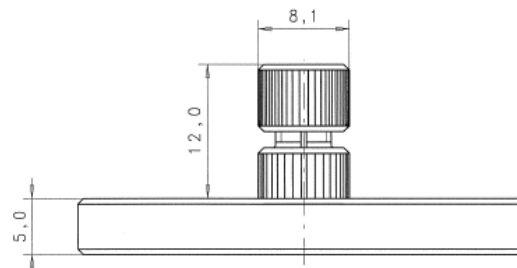
3 Operating instruction

Insert the terminated cable with the fiber end sleeve fully into the polishing jig. Press the tool on the polish paper (grid P1000) and polish the fiber until the fiber is flush with the fiber end sleeve. Use a hard and plain support plate (e.g. glass plate).



4 Technical Data

Material:	Stainless steel
Dimensions:	d = 40mm
Jig height:	5mm
Weight:	51.70 g



Pic. 2 Drawing

The information released by Ratioplast-Optoelectronics GmbH in this data sheet is believed to be accurate and reliable. However, no responsibility is assumed by Ratioplast-Optoelectronics GmbH for its use. Ratioplast-Optoelectronics GmbH reserves the right to change circuitry and specifications at any time without notification to the customer.