



1.0mm Terminal / Housing

Technical drawings showing cross-sections and dimensions for the 1.0mm terminal and housing. Dimensions include: 0.120, 1.4±0.25, 1.40±0.25, 0.53±0.20, 3.95±0.25, 0.82±0.20, 1.40±0.10, 1.05±0.25, 0.85±0.25, 0.76±0.10, 1.65±0.15, 1.35±0.10, 0.27±0.10, 0.40±0.10.

SEC:A-A
SEC:B-B

Part No.:1001-T-L

Part No	Wire Range	Insulation O.D.	Material	Finish
1001-TTP-L	AWG#28-#32	0.80mm(max)	Phosphor Bronze	Tin Plated
1001-TGP-L	AWG#28-#32	0.80mm(max)	Phosphor Bronze	Gold Plated

Specifications

Current Rating: 1A AC,DC
 Voltage Rating: 50V AC,DC
 Temperature Range: -25°C to +85°C
 Contact Resistance: 20mΩ Max
 Insulation Resistance: 100MΩ Min
 Withstanding Voltage: 500V AC/minute
 Material: PBT, UL94V-0

Part No.	Dimensions	
	A	B
1001H-206W-L	5.00	9.00
1001H-208W-L	7.00	11.00
1001H-209W-L	8.00	12.00
1001H-210W-L	9.00	13.00
1001H-215W-L	14.00	18.00
1001H-220W-L	19.00	23.00
1001H-225W-L	24.00	28.00

Technical drawings and 3D model of the 1001H-2XXW-L terminal housing. Dimensions include: A±0.20, 1.00±0.10, 4.90±0.25, 5.00±0.25, 4.20±0.20, B±0.25.

Part No.:1001H-2XXW-L

Specifications

Current Rating: 1A AC,DC
 Voltage Rating: 50V AC,DC
 Temperature Range: -25°C to +85°C
 Contact Resistance: 20mΩ Max
 Insulation Resistance: 100MΩ Min
 Withstanding Voltage: 500V AC/minute
 Material: PBT, UL94V-0

Technical drawings and 3D model of the 1001H-1XXW-L terminal housing. Dimensions include: 1.00±0.10, A±0.20, 2.80±0.25, 5.00±0.25, 2.10±0.20, C±0.25, B-2.0±0.25, 2.10±0.20.

(WITH Ear) (W/O Ear)

Part No.:1001H-1XXW-L

1: WITH Ear
2: W/O Ear

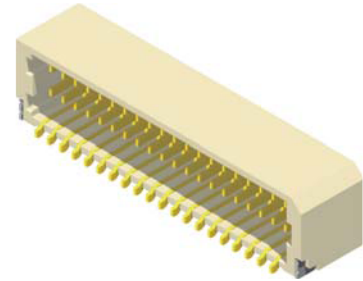
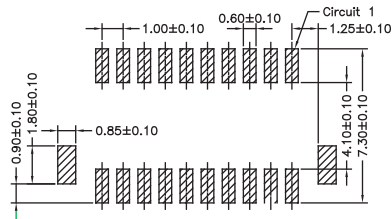
Part No.	Dimensions		
	A	B	C
1001H-102W-L	1.00	3.00	5.00
1001H-103W-L	2.00	4.00	6.00
1001H-104W-L	3.00	5.00	7.00
1001H-105W-L	4.00	6.00	8.00
1001H-106W-L	5.00	7.00	9.00
1001H-107W-L	6.00	8.00	10.00
1001H-108W-L	7.00	9.00	11.00
1001H-109W-L	8.00	10.00	12.00
1001H-110W-L	9.00	11.00	13.00
1001H-111W-L	10.00	12.00	14.00
1001H-112W-L	11.00	13.00	15.00
1001H-113W-L	12.00	14.00	16.00
1001H-114W-L	13.00	15.00	17.00
1001H-115W-L	14.00	16.00	18.00
1001H-116W-L	15.00	17.00	19.00
1001H-117W-L	16.00	18.00	20.00
1001H-118W-L	17.00	19.00	21.00
1001H-119W-L	18.00	20.00	22.00
1001H-120W-L	19.00	21.00	23.00



1.0mm Wafer SMT R/A Type

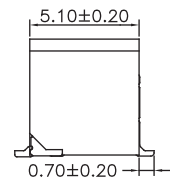
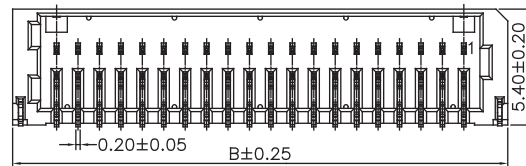
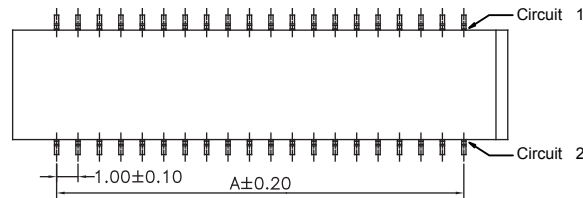
Specifications

Current Rating: 1A AC,DC
 Voltage Rating: 50V AC,DC
 Temperature Range: -25°C to +85°C
 Contact Resistance: 20mΩ Max
 Insulation Resistance: 100MΩ Min
 Withstanding Voltage: 500V AC/minute
 Terminal: Phosphor Bronze / Tin Plated
 Solder Tabs: Brass / Tin Plated
 Material:Nylon 6T,UL94V-0



PCB LAYOUT

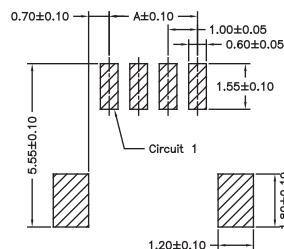
Part No.	Dimensions	
	A	B
1001MR-206GW-U	5.00	9.10
1001MR-208GW-U	7.00	11.10
1001MR-210GW-U	9.00	13.10
1001MR-215GW-U	14.00	18.10
1001MR-220GW-U	19.00	23.10
1001MR-225GW-U	24.00	28.10



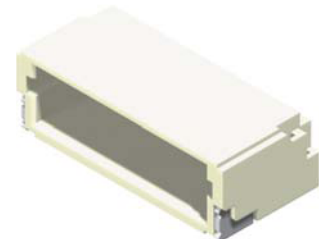
Part No.:1001MR-2XXGW-U

Specifications

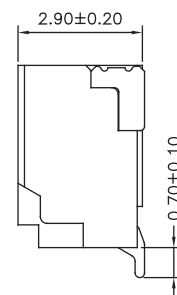
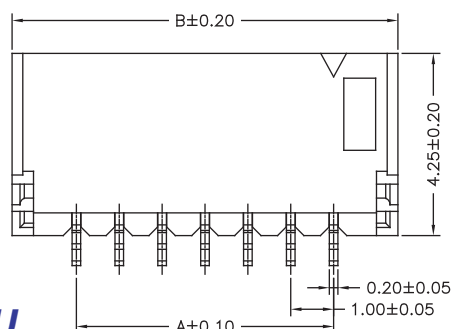
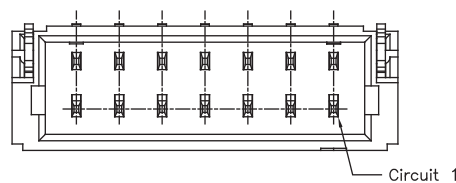
Current Rating: 1A AC,DC
 Voltage Rating: 50V AC,DC
 Temperature Range: -25°C to +85°C
 Contact Resistance: 20mΩ Max
 Insulation Resistance: 100MΩ Min
 Withstanding Voltage: 500V AC/minute
 Terminal: Phosphor Bronze / Tin Plated
 Solder Tabs: Brass / Tin Plated
 Material:Nylon 6T,UL94V-0



PCB LAYOUT



Part No.	Dimensions	
	A	B
1001MR-102TW-U	1.00	4.00
1001MR-103TW-U	2.00	5.00
1001MR-104TW-U	3.00	6.00
1001MR-105TW-U	4.00	7.00
1001MR-106TW-U	5.00	8.00
1001MR-107TW-U	6.00	9.00
1001MR-108TW-U	7.00	10.00
1001MR-109TW-U	8.00	11.00
1001MR-110TW-U	9.00	12.00
1001MR-111TW-U	10.00	13.00
1001MR-112TW-U	11.00	14.00
1001MR-113TW-U	12.00	15.00
1001MR-114TW-U	13.00	16.00
1001MR-115TW-U	14.00	17.00
1001MR-116TW-U	15.00	18.00
1001MR-117TW-U	16.00	19.00
1001MR-118TW-U	17.00	20.00
1001MR-119TW-U	18.00	21.00
1001MR-120TW-U	19.00	22.00
1001MR-124TW-U	23.00	26.00



Part No.:1001MR-1XXTW-U

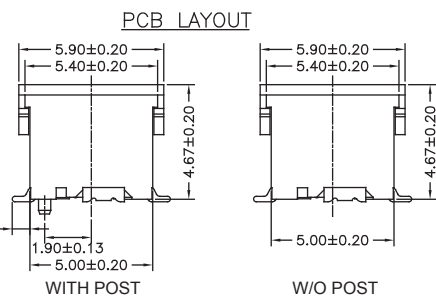
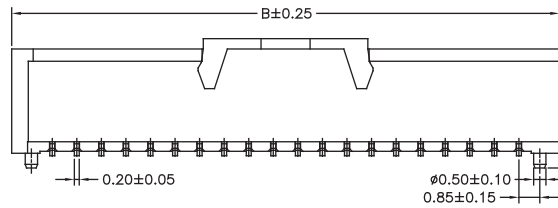
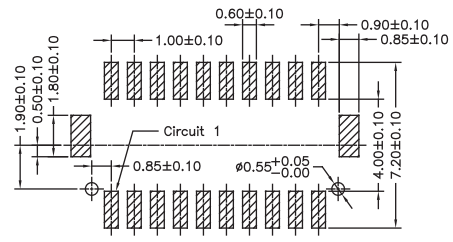
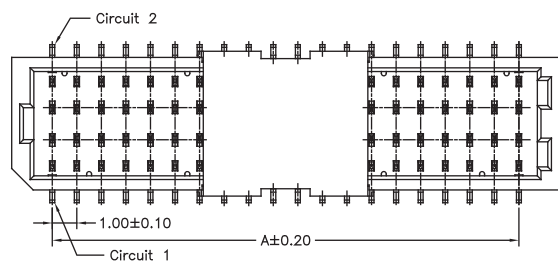
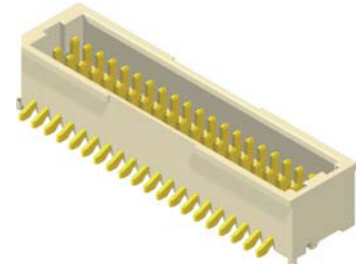


1.0mm Wafer SMT Straight Type

Specifications

Current Rating: 1A AC,DC
 Voltage Rating: 50V AC,DC
 Temperature Range: -25°C to +85°C
 Contact Resistance: 20mΩ Max
 Insulation Resistance: 100MΩ Min
 Withstanding Voltage: 500V AC/minute
 Terminal: Phosphor Bronze / Gold Plated
 Solder Tabs: Brass / Gold Plated
 Material:Nylon 6T,UL94V-0

Part No.	Dimensions	
	A	B
1001MS-206GW-U	5.00	8.30
1001MS-208GW-U	7.00	10.30
1001MS-210GW-U	9.00	12.30
1001MS-215GW-U	14.00	17.30
1001MS-220GW-U	19.00	22.30
1001MS-225GW-U	24.00	27.30



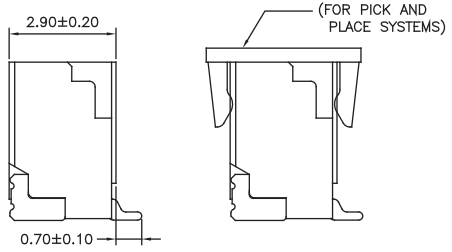
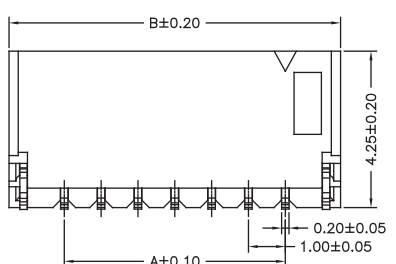
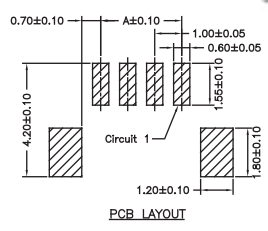
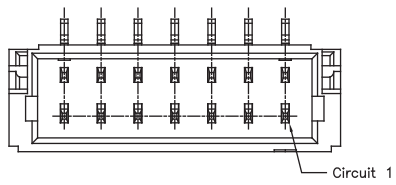
Part No.:1001MS-2XXGW-U

1: WITH POST
 2: W/O POST

Specifications

Current Rating: 1A AC,DC
 Voltage Rating: 50V AC,DC
 Temperature Range: -25°C to +85°C
 Contact Resistance: 20mΩ Max
 Insulation Resistance: 100MΩ Min
 Withstanding Voltage: 500V AC/minute
 Terminal: Phosphor Bronze / Tin Plated
 Solder Tabs: Brass / Tin Plated
 Material:Nylon 6T,UL94V-0

Part No.	Dimensions	
	A	B
1001MS-102TW-U	1.00	4.00
1001MS-103TW-U	2.00	5.00
1001MS-104TW-U	3.00	6.00
1001MS-105TW-U	4.00	7.00
1001MS-106TW-U	5.00	8.00
1001MS-107TW-U	6.00	9.00
1001MS-108TW-U	7.00	10.00
1001MS-109TW-U	8.00	11.00
1001MS-110TW-U	9.00	12.00
1001MS-111TW-U	10.00	13.00
1001MS-112TW-U	11.00	14.00
1001MS-113TW-U	12.00	15.00
1001MS-114TW-U	13.00	16.00
1001MS-115TW-U	14.00	17.00
1001MS-116TW-U	15.00	18.00
1001MS-117TW-U	16.00	19.00
1001MS-118TW-U	17.00	20.00
1001MS-119TW-U	18.00	21.00
1001MS-120TW-U	19.00	22.00



Part No.:1001MS-1XXTW-U