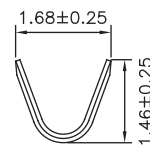
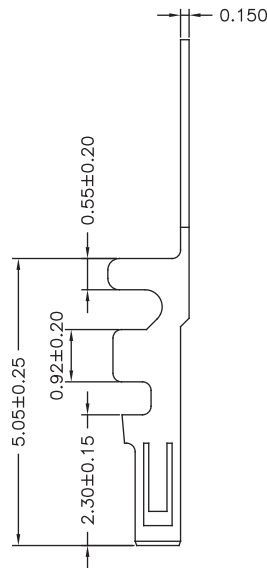
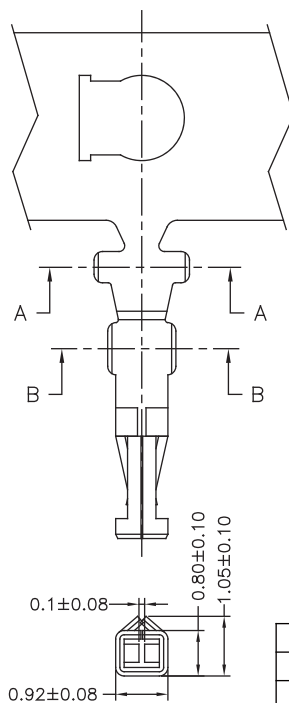
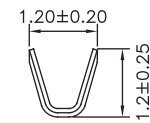




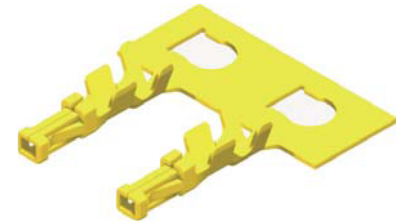
## 1.25mm Terminal / Housing



SEC:A-A



SEC:B-B

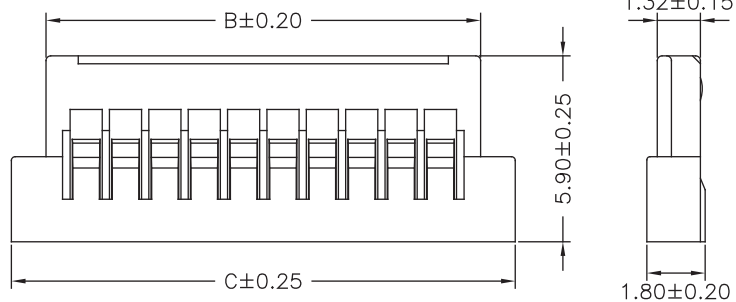
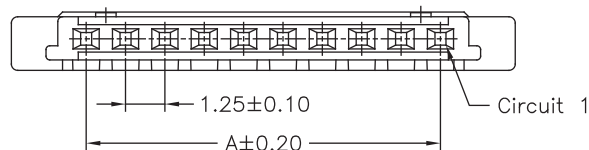
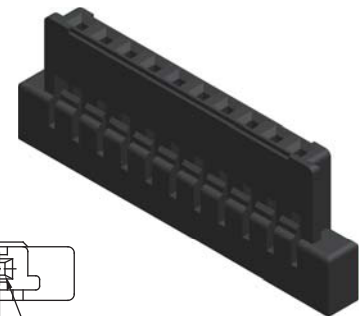


Part No.	Wire Range	Insulation O.D.	Material	Finish
1255-TGP-L	AWG#28-#32	1.00mm(max)	Phosphor Bronze	Gold-plated
1255-TTP-L	AWG#28-#32	1.00mm(max)	Phosphor Bronze	Tin Plated

### Part No.:1255-T-L

#### Specifications

Current Rating: 1A AC,DC  
 Voltage Rating: 200V AC,DC  
 Temperature Range: -25°C to +85°C  
 Contact Resistance: 40mΩ Max  
 Insulation Resistance: 100MΩ Min  
 Withstanding Voltage: 500V AC/minute  
 Material:Nylon 66,UL94V-0



Part No.	Dimensions		
	A	B	C
1255H-02B-L	1.25	3.80	6.00
1255H-03B-L	2.50	5.05	7.25
1255H-04B-L	3.75	6.30	8.50
1255H-05B-L	5.00	7.55	9.75
1255H-06B-L	6.25	8.80	11.00
1255H-08B-L	8.75	11.30	13.50
1255H-10B-L	11.25	13.80	16.00
1255H-15B-L	17.50	20.05	22.25
1255H-20B-L	23.75	26.30	28.50
1255H-25B-L	30.00	32.55	34.75
1255H-30B-L	36.25	38.80	41.00