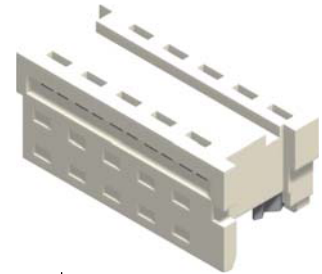




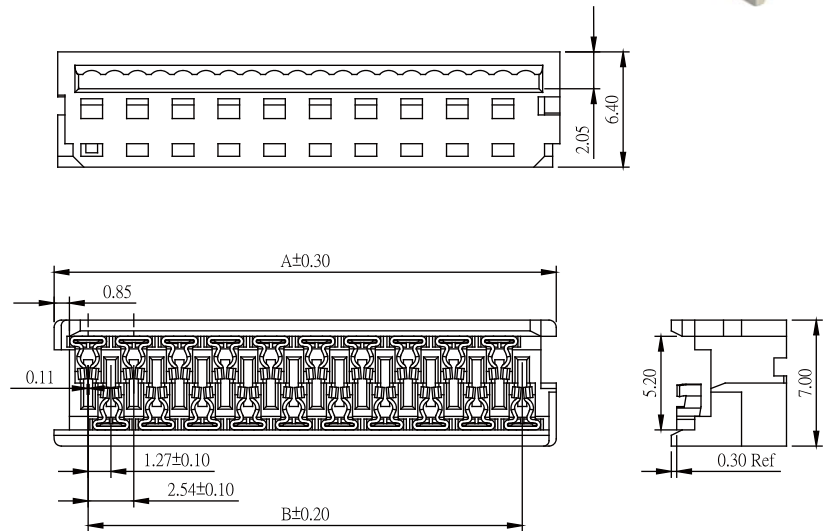
1.27mm Housing IDC Type / SMT Straight

Specifications

Current Rating: 1.2A AC,DC
 Voltage Rating: 32V AC,DC
 Temperature Range: -40°C to +105°C
 Contact Resistance: 10mΩ Max.
 Insulation Resistance: 1000MΩ Min.
 Withstanding Voltage: 500V AC/minute
 Pin Material: Tin Plated
 Material:PBT,UL94V-0



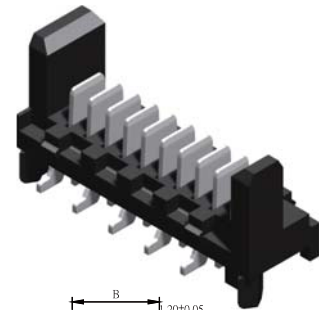
| Part No. | Dimensions | |
|----------------|------------|-------|
| | A | B |
| 1271IDC-04TW-L | 7.59 | 3.81 |
| 1271IDC-06TW-L | 10.13 | 6.35 |
| 1271IDC-08TW-L | 12.67 | 8.89 |
| 1271IDC-10TW-L | 15.21 | 11.43 |
| 1271IDC-12TW-L | 17.75 | 13.97 |
| 1271IDC-14TW-L | 20.29 | 16.51 |
| 1271IDC-16TW-L | 22.83 | 19.05 |
| 1271IDC-18TW-L | 25.37 | 21.59 |
| 1271IDC-20TW-L | 27.91 | 24.13 |
| 1271IDC-22TW-L | 30.45 | 26.67 |
| 1271IDC-24TW-L | 32.99 | 29.21 |
| 1271IDC-26TW-L | 35.53 | 31.75 |



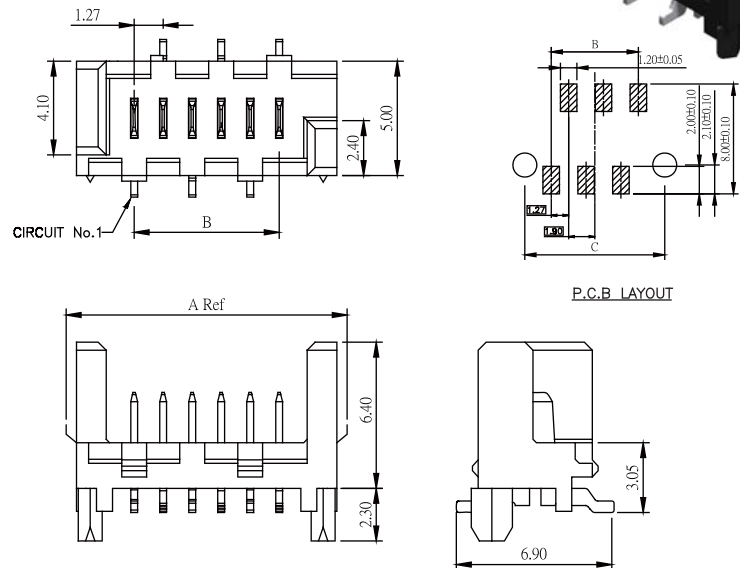
Part No.:1271IDC-XXTW-L

Specifications

Current Rating: 1A AC,DC
 Voltage Rating: 30V AC,DC
 Temperature Range: -40°C to +105°C
 Contact Resistance: 20mΩ Max
 Insulation Resistance: 1000MΩ Min
 Withstanding Voltage: 500V AC/minute
 Pin Material: Tin Plating
 Material:LCP,UL94V-0



| Part No. | Dimensions | | |
|---------------|------------|-------|-------|
| | A | B | C |
| 1271MS-04TB-U | 8.86 | 3.81 | 7.66 |
| 1271MS-06TB-U | 11.40 | 6.35 | 10.20 |
| 1271MS-08TB-U | 13.94 | 8.89 | 12.74 |
| 1271MS-10TB-U | 16.48 | 11.43 | 15.28 |
| 1271MS-12TB-U | 19.02 | 13.97 | 17.82 |
| 1271MS-14TB-U | 21.56 | 16.51 | 20.36 |
| 1271MS-16TB-U | 24.10 | 19.05 | 22.90 |
| 1271MS-18TB-U | 26.64 | 21.59 | 25.44 |
| 1271MS-20TB-U | 29.18 | 24.13 | 27.98 |
| 1271MS-22TB-U | 31.72 | 26.67 | 30.52 |
| 1271MS-24TB-U | 34.26 | 29.21 | 33.06 |
| 1271MS-26TB-U | 36.80 | 31.75 | 35.60 |



Part No.:1271MS-XXTW-U

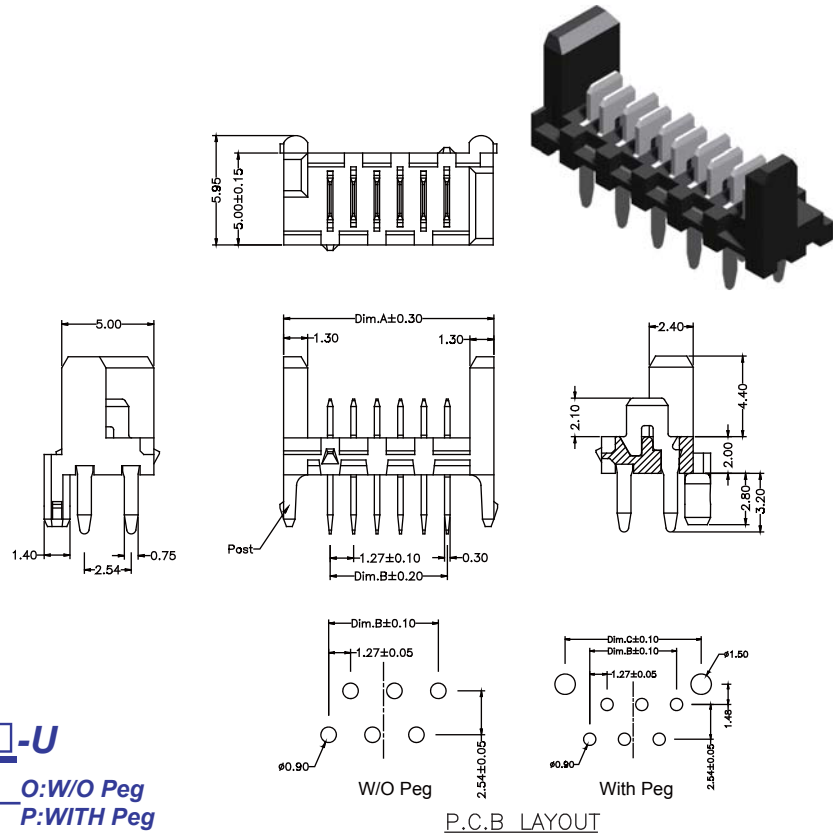


1.27mm Wafer Right Angle / Straight Type

Specifications

Current Rating: 2.4A AC,DC
 Voltage Rating: 250V AC,DC
 Temperature Range: -40°C to +105°C
 Contact Resistance: 15mΩ Max
 Insulation Resistance: 1000MΩ Min
 Withstanding Voltage: 750V AC/minute
 Pin Material: Tin Plated
 Material: LCP, UL94V-0

| Part No. | Dimensions | |
|--------------|------------|-------|
| | A | B |
| 1271S-04TB-U | 8.86 | 3.81 |
| 1271S-06TB-U | 11.40 | 6.35 |
| 1271S-08TB-U | 13.94 | 8.89 |
| 1271S-10TB-U | 16.48 | 11.43 |
| 1271S-12TB-U | 19.02 | 13.97 |
| 1271S-14TB-U | 21.56 | 16.51 |
| 1271S-16TB-U | 24.10 | 19.05 |
| 1271S-18TB-U | 26.64 | 21.59 |
| 1271S-20TB-U | 29.18 | 24.13 |
| 1271S-22TB-U | 31.72 | 26.67 |
| 1271S-24TB-U | 34.26 | 29.21 |
| 1271S-26TB-U | 36.80 | 31.75 |



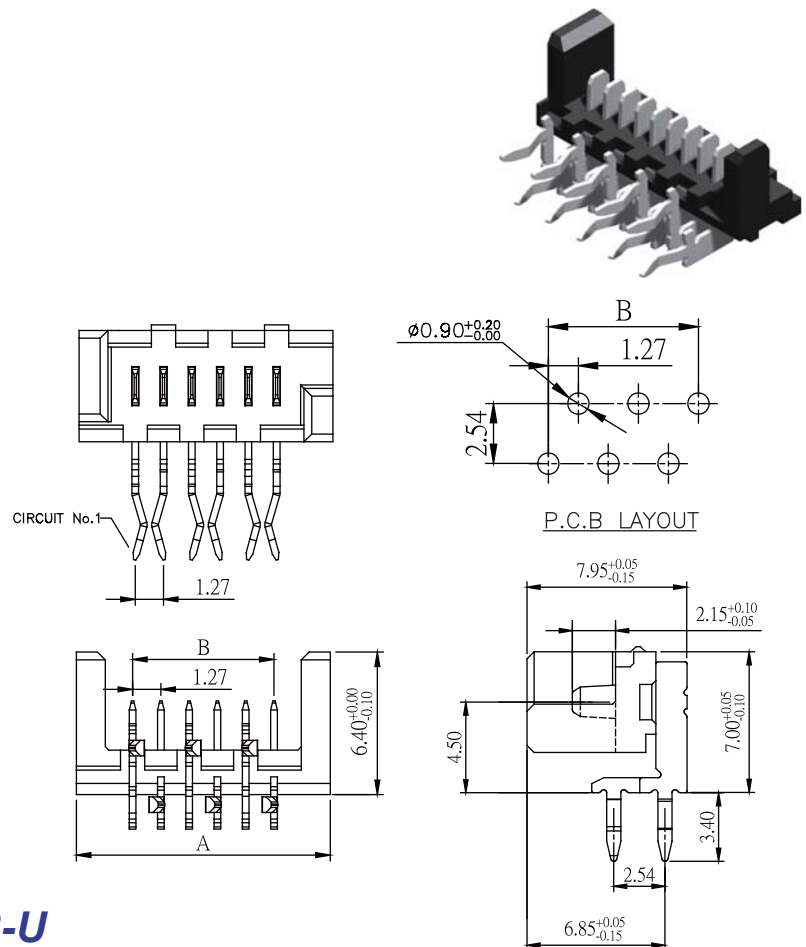
Part No.: 1271S-XTB -U

O: W/O Peg
 P: WITH Peg

Specifications

Current Rating: 2.4A AC,DC
 Voltage Rating: 250V AC,DC
 Temperature Range: -40°C to +105°C
 Contact Resistance: 15mΩ Max.
 Insulation Resistance: 1000MΩ Min.
 Withstanding Voltage: 750V AC/minute
 Pin Material: Tin Plating
 Material: LCP, UL94V-0

| Part No. | Dimensions | |
|--------------|------------|-------|
| | A | B |
| 1271R-04TB-U | 8.86 | 3.81 |
| 1271R-06TB-U | 11.40 | 6.35 |
| 1271R-08TB-U | 13.94 | 8.89 |
| 1271R-10TB-U | 16.48 | 11.43 |
| 1271R-12TB-U | 19.02 | 13.97 |
| 1271R-14TB-U | 21.56 | 16.51 |
| 1271R-16TB-U | 24.10 | 19.05 |
| 1271R-18TB-U | 26.64 | 21.59 |
| 1271R-20TB-U | 29.18 | 24.13 |
| 1271R-22TB-U | 31.72 | 26.67 |
| 1271R-24TB-U | 34.26 | 29.21 |
| 1271R-26TB-U | 36.80 | 31.75 |



Part No.: 1271R-XTB-U