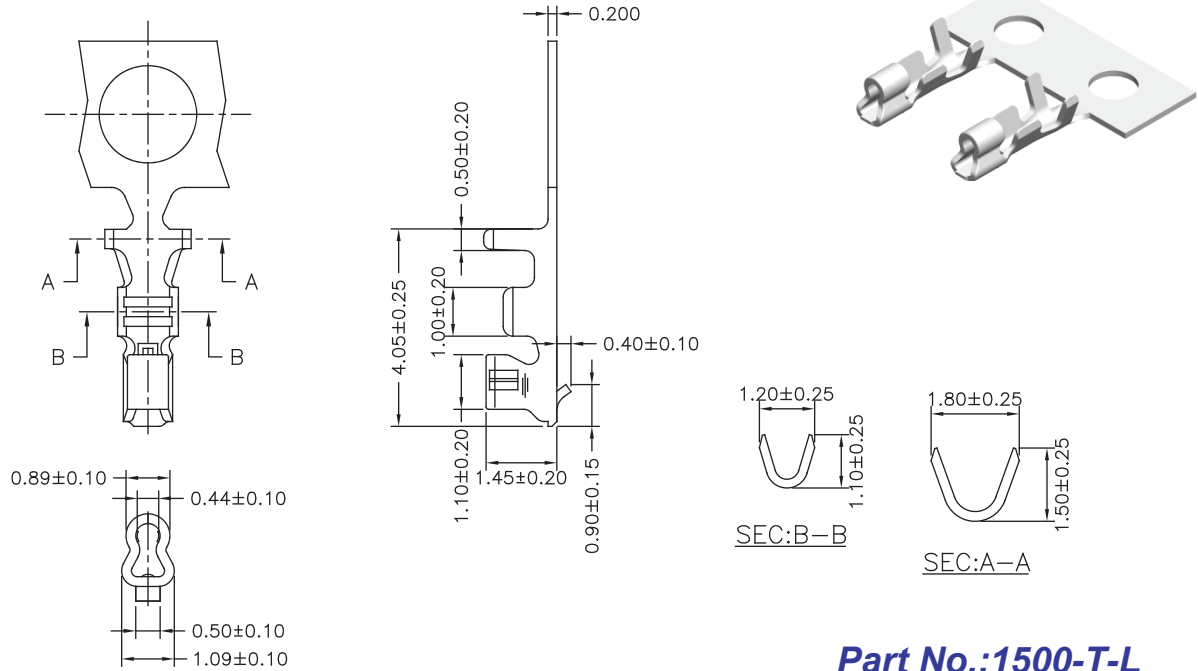




1.5mm Terminal / Housing



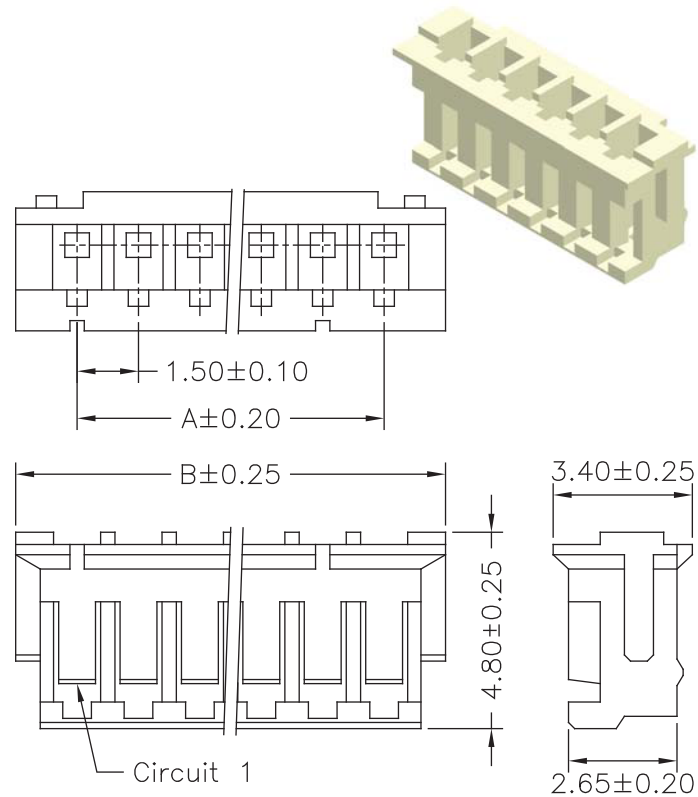
Part No.:1500-T-L

Part No.	Wire Range	Insulation O.D.	Material	Finish
1500-TTP-L	AWG#26-#32	1.10mm(max)	Phosphor Bronze	Tin Plated
1500-TGP-L	AWG#26-#32	1.10mm(max)	Phosphor Bronze	Gold Plated

Specifications

Current Rating: 1A AC,DC
 Voltage Rating: 100V AC,DC
 Temperature Range: -25°C to +85°C
 Contact Resistance: 20mΩ Max
 Insulation Resistance: 500MΩ Min
 Withstanding Voltage: 500V AC/minute
 Material:Nylon 66,UL94V-0

Part No.	Dimensions	
	A	B
1500H-02W-L	1.50	4.50
1500H-03W-L	3.00	6.00
1500H-04W-L	4.50	7.50
1500H-05W-L	6.00	9.00
1500H-06W-L	7.50	10.50
1500H-07W-L	9.00	12.00
1500H-08W-L	10.50	13.50
1500H-09W-L	12.00	15.00
1500H-10W-L	13.50	16.50
1500H-11W-L	15.00	18.00
1500H-12W-L	16.50	19.50
1500H-13W-L	18.00	21.00



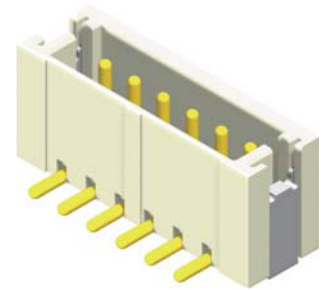
Part No.:1500H-XXW-L



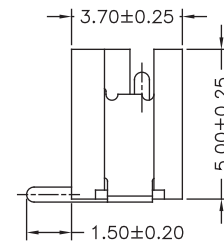
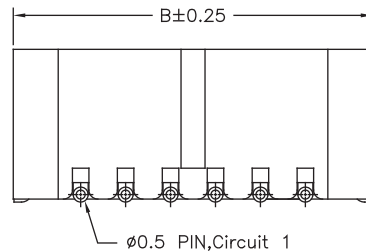
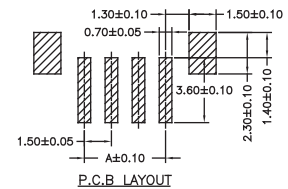
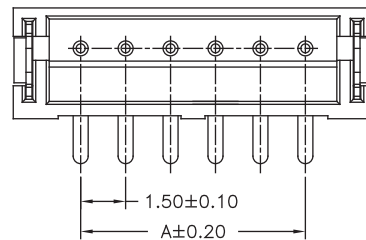
1.5mm Wafer SMT Straight & SMT R/A Type

Specifications

Current Rating: 1A AC,DC
 Voltage Rating: 100V AC,DC
 Temperature Range: -25°C to +85°C
 Contact Resistance: 20mΩ Max
 Insulation Resistance: 500MΩ Min
 Withstanding Voltage: 500V AC/minute
 Terminal: Brass / Gold Plated
 Solder Tabs: Brass / Gold Plated
 Material:Nylon 6T,UL94V-0



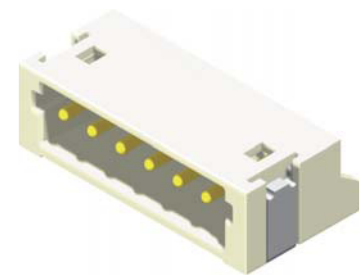
Part No.	Dimensions	
	A	B
1500MS-02GW-U	1.50	6.00
1500MS-03GW-U	3.00	7.50
1500MS-04GW-U	4.50	9.00
1500MS-05GW-U	6.00	10.50
1500MS-06GW-U	7.50	12.00
1500MS-07GW-U	9.00	13.50
1500MS-08GW-U	10.50	15.00
1500MS-09GW-U	12.00	16.50
1500MS-10GW-U	13.50	18.00
1500MS-11GW-U	15.00	19.50
1500MS-12GW-U	16.50	21.00
1500MS-13GW-U	18.00	22.50



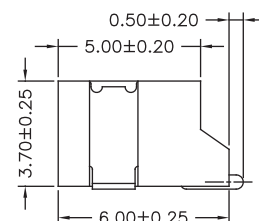
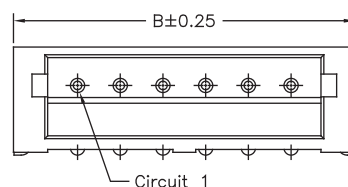
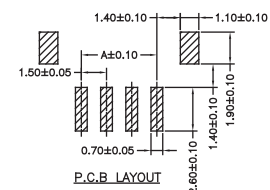
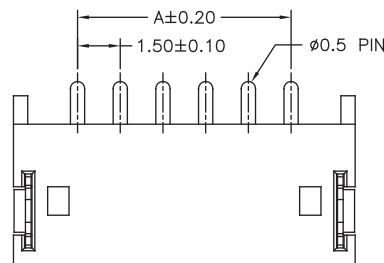
Part No.:1500MS-XXGW-U

Specifications

Current Rating: 1A AC,DC
 Voltage Rating: 100V AC,DC
 Temperature Range: -25°C to +85°C
 Contact Resistance: 20mΩ Max
 Insulation Resistance: 500MΩ Min
 Withstanding Voltage: 500V AC/minute
 Terminal: Brass / Gold Plated
 Solder Tabs: Brass / Gold Plated
 Material:Nylon 6T,UL94V-0



Part No.	Dimensions	
	A	B
1500MR-02GW-U	1.50	6.00
1500MR-03GW-U	3.00	7.50
1500MR-04GW-U	4.50	9.00
1500MR-05GW-U	6.00	10.50
1500MR-06GW-U	7.50	12.00
1500MR-07GW-U	9.00	13.50
1500MR-08GW-U	10.50	15.00
1500MR-09GW-U	12.00	16.50
1500MR-10GW-U	13.50	18.00
1500MR-11GW-U	15.00	19.50
1500MR-12GW-U	16.50	21.00
1500MR-13GW-U	18.00	22.50



Part No.:1500MR-XXGW-U

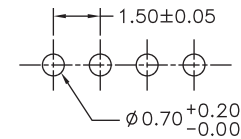
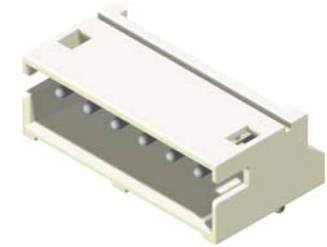
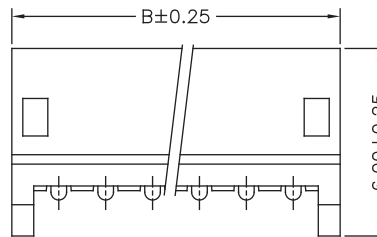
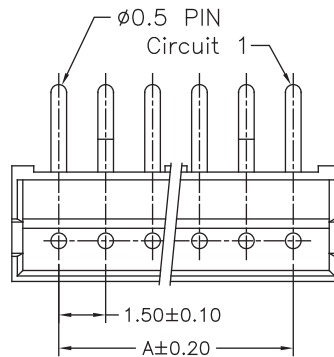


1.5mm Wafer Right Angle & Straight Type

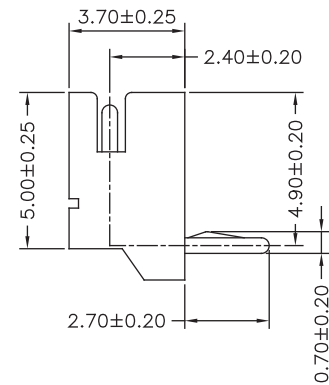
Specifications

Current Rating: 1A AC,DC
 Voltage Rating: 100V AC,DC
 Temperature Range: -25°C to +85°C
 Contact Resistance: 20mΩ Max
 Insulation Resistance: 500M
 Withstanding Voltage: 500V AC/minute
 Terminal: Brass / Tin Plated
 Material:Nylon 66,UL94V-0

Part No.	Dimensions	
	A	B
1500R-02TW-L	1.50	4.50
1500R-03TW-L	3.00	6.00
1500R-04TW-L	4.50	7.50
1500R-05TW-L	6.00	9.00
1500R-06TW-L	7.50	10.50
1500R-07TW-L	9.00	12.00
1500R-08TW-L	10.50	13.50
1500R-09TW-L	12.00	15.00
1500R-10TW-L	13.50	16.50
1500R-11TW-L	15.00	18.00
1500R-12TW-L	16.50	19.50
1500R-13TW-L	18.00	21.00



P.C.B. LAYOUT

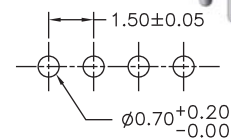
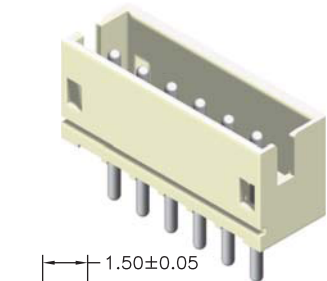
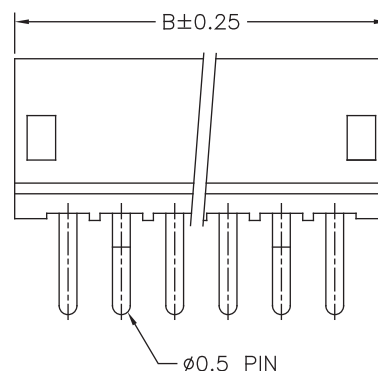
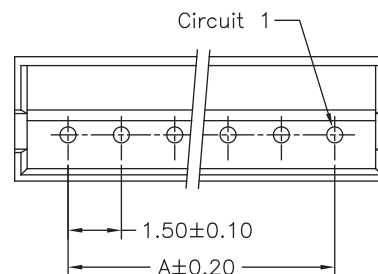


Part No.:1500R-XXTW-L

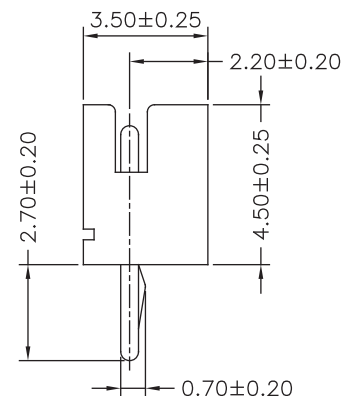
Specifications

Current Rating: 1A AC,DC
 Voltage Rating: 100V AC,DC
 Temperature Range: -25°C to +85°C
 Contact Resistance: 20mΩ Max
 Insulation Resistance: 500M
 Withstanding Voltage: 500V AC/minute
 Terminal: Brass / Tin Plated
 Material:Nylon 66,UL94V-0

Part No.	Dimensions	
	A	B
1500S-02TW-L	1.50	4.50
1500S-03TW-L	3.00	6.00
1500S-04TW-L	4.50	7.50
1500S-05TW-L	6.00	9.00
1500S-06TW-L	7.50	10.50
1500S-07TW-L	9.00	12.00
1500S-08TW-L	10.50	13.50
1500S-09TW-L	12.00	15.00
1500S-10TW-L	13.50	16.50
1500S-11TW-L	15.00	18.00
1500S-12TW-L	16.50	19.50
1500S-13TW-L	18.00	21.00



P.C.B. LAYOUT



Part No.:1500S-XXTW-L