

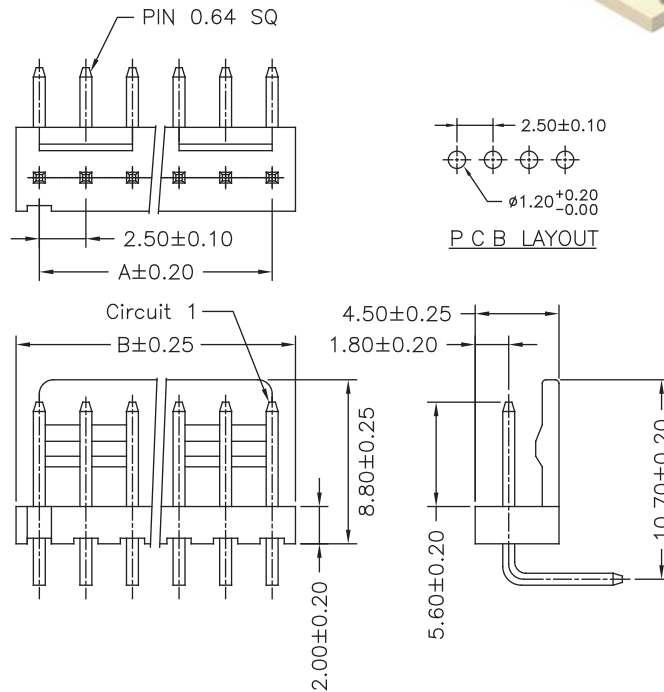


2.5mm Wafer Right Angle / Straight Type

Specifications

Current Rating: 3A AC,DC
 Voltage Rating: 250V AC,DC
 Temperature Range: -25°C to +85°C
 Contact Resistance: 10mΩ Max
 Insulation Resistance: 1000MΩ Min
 Withstanding Voltage: 800V AC/minute
 Terminal: Brass / Tin Plated
 Material: Nylon 66, UL94V-2

Part No.	Dimensions	
	A	B
2502R-02TW-L	2.50	5.00
2502R-03TW-L	5.00	7.50
2502R-04TW-L	7.50	10.00
2502R-05TW-L	10.00	12.50
2502R-06TW-L	12.50	15.00
2502R-07TW-L	15.00	17.50
2502R-08TW-L	17.50	20.00
2502R-09TW-L	20.00	22.50
2502R-10TW-L	22.50	25.00
2502R-11TW-L	25.00	27.50
2502R-12TW-L	27.50	30.00
2502R-13TW-L	30.00	32.50
2502R-14TW-L	32.50	35.00
2502R-15TW-L	35.00	37.50
2502R-16TW-L	37.50	40.00
2502R-17TW-L	40.00	42.50
2502R-18TW-L	42.50	45.00
2502R-19TW-L	45.00	47.50
2502R-20TW-L	47.50	50.00

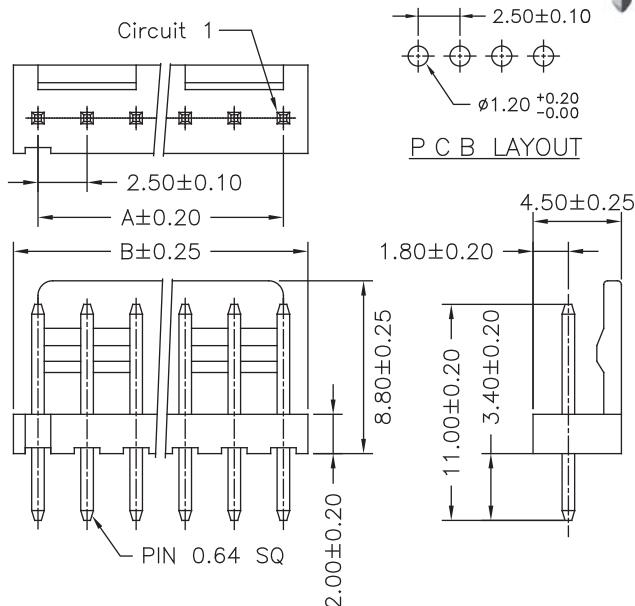


Part No.: 2502R-XXTW-L

Specifications

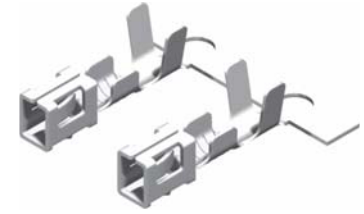
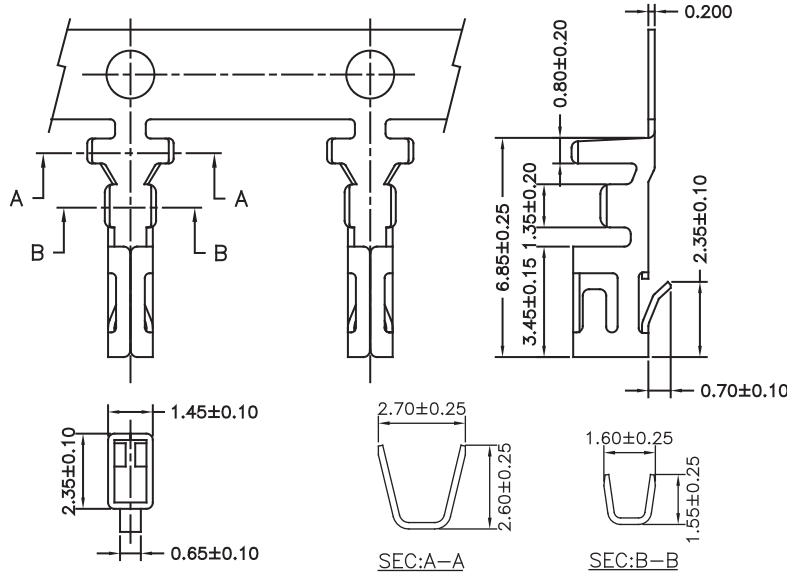
Current Rating: 3A AC,DC
 Voltage Rating: 250V AC,DC
 Temperature Range: -25°C to +85°C
 Contact Resistance: 10mΩ Max
 Insulation Resistance: 1000MΩ Min
 Withstanding Voltage: 800V AC/minute
 Terminal: Brass / Tin Plated
 Material: Nylon 66, UL94V-2

Part No.	Dimensions	
	A	B
2502S-02TW-L	2.50	5.00
2502S-03TW-L	5.00	7.50
2502S-04TW-L	7.50	10.00
2502S-05TW-L	10.00	12.50
2502S-06TW-L	12.50	15.00
2502S-07TW-L	15.00	17.50
2502S-08TW-L	17.50	20.00
2502S-09TW-L	20.00	22.50
2502S-10TW-L	22.50	25.00
2502S-11TW-L	25.00	27.50
2502S-12TW-L	27.50	30.00
2502S-13TW-L	30.00	32.50
2502S-14TW-L	32.50	35.00
2502S-15TW-L	35.00	37.50
2502S-16TW-L	37.50	40.00
2502S-17TW-L	40.00	42.50
2502S-18TW-L	42.50	45.00
2502S-19TW-L	45.00	47.50
2502S-20TW-L	47.50	50.00





2.5mm Terminal / Housing



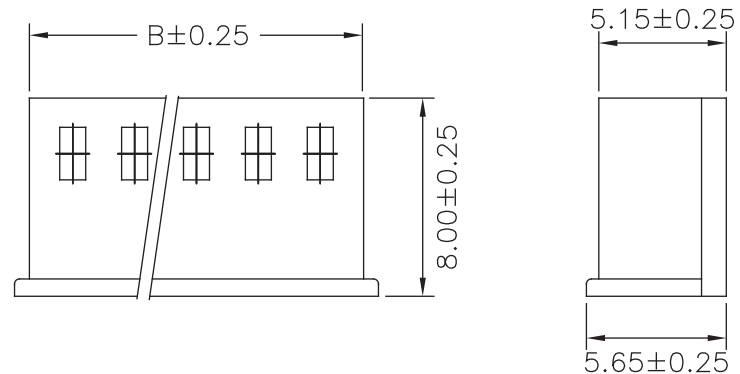
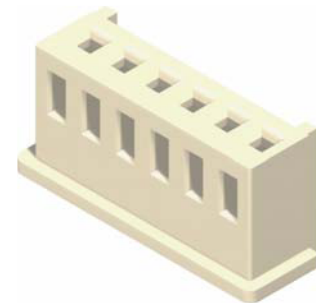
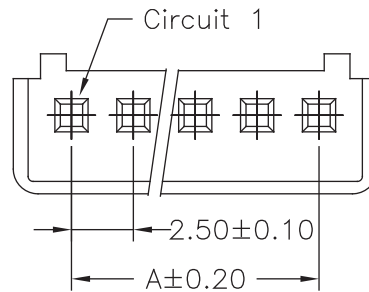
Part No.:2502-T-L

Wire Range	Insulation O.D.	Material	Finish
AWG#22-#28	1.75mm(max)	Brass	Tin Plated

Specifications

Current Rating: 3A AC,DC
 Voltage Rating: 250V AC,DC
 Temperature Range: -25°C to +85°C
 Contact Resistance: 10mΩ Max
 Insulation Resistance: 1000MΩ Min
 Withstanding Voltage: 800V AC/minute
 Material:Nylon 66,UL94V-2

Part No.	Dimensions	
	A	B
2502H-02W-L	2.50	6.00
2502H-03W-L	5.00	8.50
2502H-04W-L	7.50	11.00
2502H-05W-L	10.00	13.50
2502H-06W-L	12.50	16.00
2502H-07W-L	15.00	18.50
2502H-08W-L	17.50	21.00
2502H-09W-L	20.00	23.50
2502H-10W-L	22.50	26.00
2502H-11W-L	25.00	28.50
2502H-12W-L	27.50	31.00
2502H-13W-L	30.00	33.50
2502H-14W-L	32.50	36.00
2502H-15W-L	35.00	38.50
2502H-16W-L	37.50	41.00
2502H-17W-L	40.00	43.50
2502H-18W-L	42.50	46.00
2502H-19W-L	45.00	48.50
2502H-20W-L	47.50	51.00



Part No.:2502H-XXW-L