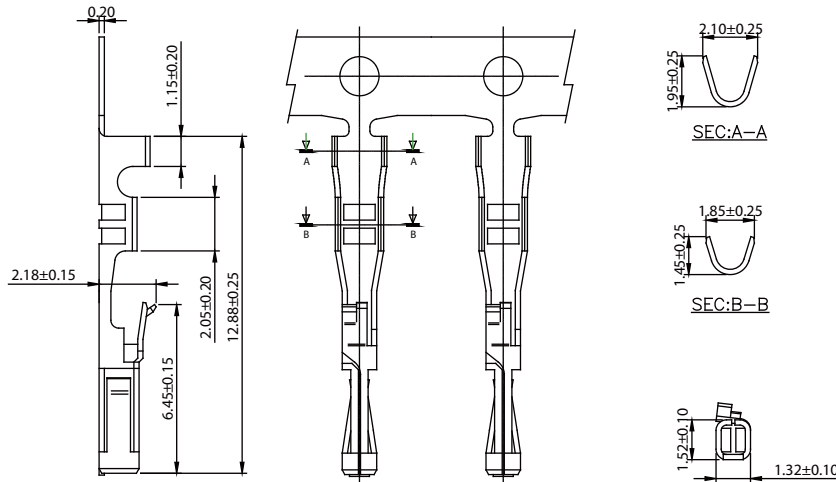




2.54mm Mini Latch Terminal / Housing

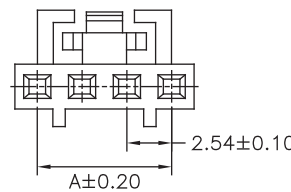


Part No.	Wire Range	Insulation O.D.	Material	Finish
2545-TGP-L	AWG#22-#26	1.63mm(max)	Phosphor Bronze	Gold Plated
2545-TGB-L	AWG#22-#26	1.63mm(max)	Brass	Gold Plated

Part No.:2545-T-L

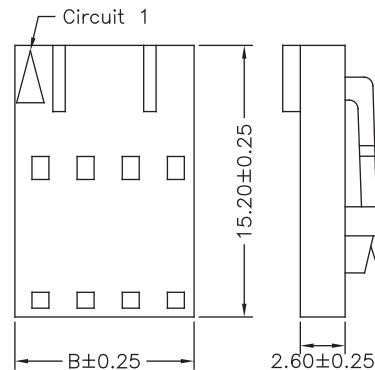
Specifications

Current Rating: 3A AC,DC
 Voltage Rating: 250V AC,DC
 Temperature Range: -25°C to +85°C
 Contact Resistance: 20mΩ Max
 Insulation Resistance: 1000MΩ Min
 Withstanding Voltage: 1500V AC/minute
 Material: PBT,UL94V-0



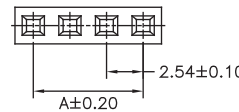
Part No.	Dimensions		Part No.	Dimensions	
	A	B		A	B
2545H-02BA-L	2.54	5.20	2545H-14BA-L	33.02	35.80
2545H-03BA-L	5.08	7.80	2545H-15BA-L	35.56	38.30
2545H-04BA-L	7.62	10.30	2545H-16BA-L	38.10	40.90
2545H-05BA-L	10.16	12.90	2545H-17BA-L	40.64	43.40
2545H-06BA-L	12.70	15.40	2545H-18BA-L	43.18	46.00
2545H-07BA-L	15.24	18.00	2545H-19BA-L	45.72	48.50
2545H-08BA-L	17.78	20.50	2545H-20BA-L	48.26	51.10
2545H-09BA-L	20.32	23.10	2545H-21BA-L	50.80	53.60
2545H-10BA-L	22.86	25.60	2545H-22BA-L	53.34	56.20
2545H-11BA-L	25.40	28.10	2545H-23BA-L	55.88	58.70
2545H-12BA-L	27.94	30.70	2545H-24BA-L	58.42	61.20
2545H-13BA-L	30.48	33.20	2545H-25BA-L	60.96	63.80

Part No.:2545H-XXBA-L



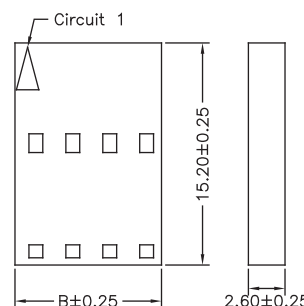
Specifications

Current Rating: 3A AC,DC
 Voltage Rating: 250V AC,DC
 Temperature Range: -25°C to +85°C
 Contact Resistance: 20mΩ Max
 Insulation Resistance: 1000MΩ Min
 Withstanding Voltage: 1500V AC/minute
 Material: PBT,UL94V-0



Part No.	Dimensions		Part No.	Dimensions	
	A	B		A	B
2545H-02BB-L	2.54	5.20	2545H-14BB-L	33.02	35.80
2545H-03BB-L	5.08	7.80	2545H-15BB-L	35.56	38.30
2545H-04BB-L	7.62	10.30	2545H-16BB-L	38.10	40.90
2545H-05BB-L	10.16	12.90	2545H-17BB-L	40.64	43.40
2545H-06BB-L	12.70	15.40	2545H-18BB-L	43.18	46.00
2545H-07BB-L	15.24	18.00	2545H-19BB-L	45.72	48.50
2545H-08BB-L	17.78	20.50	2545H-20BB-L	48.26	51.10
2545H-09BB-L	20.32	23.10	2545H-21BB-L	50.80	53.60
2545H-10BB-L	22.86	25.60	2545H-22BB-L	53.34	56.20
2545H-11BB-L	25.40	28.10	2545H-23BB-L	55.88	58.70
2545H-12BB-L	27.94	30.70	2545H-24BB-L	58.42	61.20
2545H-13BB-L	30.48	33.20	2545H-25BB-L	60.96	63.80

Part No.:2545H-XXBB-L



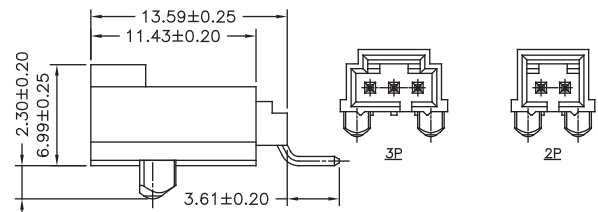
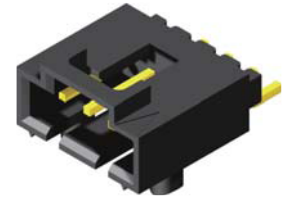
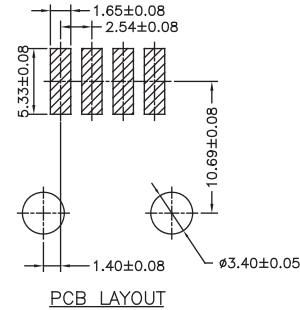
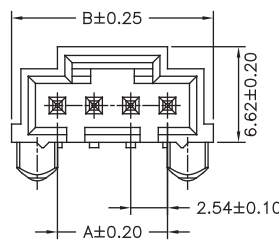
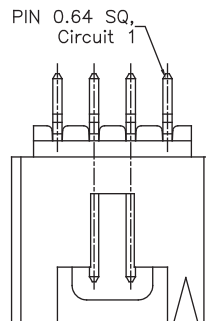


2.54mm Mini Latch Wafer SMT Right Angle / Straight Type

Specifications

Current Rating: 3A AC,DC
 Voltage Rating: 250V AC,DC
 Temperature Range: -25°C to +85°C
 Contact Resistance: 20mΩ Max
 Insulation Resistance: 1000MΩ Min
 Withstanding Voltage: 1500V AC/minute
 Terminal: Brass / Gold Plated
 Material: Nylon 6T,UL94V-0

Part No.	Dimensions	
	A	B
2545MR-02GB-U	2.54	8.89
2545MR-03GB-U	5.08	11.43
2545MR-04GB-U	7.62	13.97
2545MR-05GB-U	10.16	16.51
2545MR-06GB-U	12.70	19.05
2545MR-07GB-U	15.24	21.59
2545MR-08GB-U	17.78	24.13
2545MR-09GB-U	20.32	26.67
2545MR-10GB-U	22.86	29.21
2545MR-11GB-U	25.40	31.75
2545MR-12GB-U	27.94	34.29



Part No.:2545MR-XXGB-U

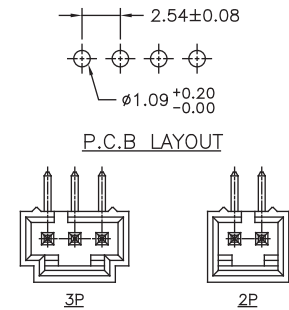
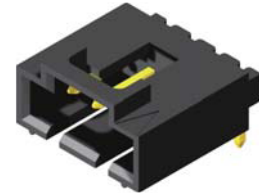
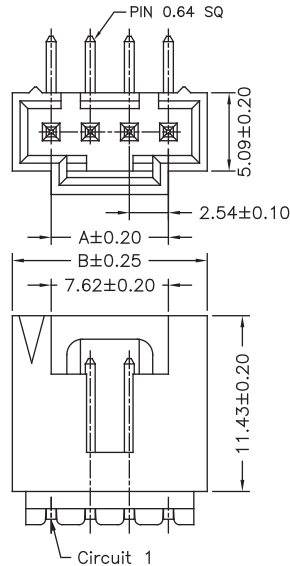


2.54mm Mini Latch Wafer Right Angle / Straight Type

Specifications

Current Rating: 3A AC,DC
 Voltage Rating: 250V AC,DC
 Temperature Range: -25°C to +85°C
 Contact Resistance: 20mΩ Max.
 Insulation Resistance: 1000MΩ Min.
 Withstanding Voltage: 1500V AC/minute
 Terminal: Brass / Gold Plated
 Material: PBT,UL94V-0

Part No.	Dimensions	
	A	B
2545R-02GB-L	2.54	7.59
2545R-03GB-L	5.08	10.13
2545R-04GB-L	7.62	12.67
2545R-05GB-L	10.16	15.21
2545R-06GB-L	12.70	17.75
2545R-07GB-L	15.24	20.29
2545R-08GB-L	17.78	22.83
2545R-09GB-L	20.32	25.37
2545R-10GB-L	22.86	27.91
2545R-11GB-L	25.40	30.45
2545R-12GB-L	27.94	32.99

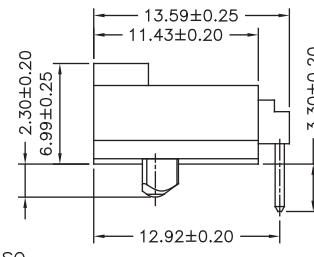
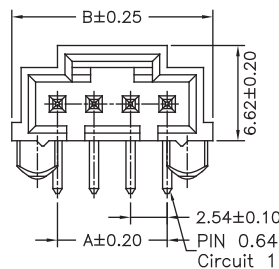
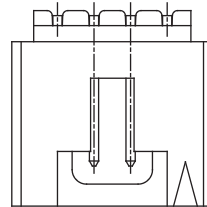


Part No.:2545R-XXGB-L

Specifications

Current Rating: 3A AC,DC
 Voltage Rating: 250V AC,DC
 Temperature Range: -25°C to +85°C
 Contact Resistance: 20mΩ Max.
 Insulation Resistance: 1000MΩ Min.
 Withstanding Voltage: 1500V AC/minute
 Terminal: Brass / Gold Plated
 Material: PBT,UL94V-0

Part No.	Dimensions	
	A	B
2545R-02GB1-L	2.54	8.89
2545R-03GB1-L	5.08	11.43
2545R-05GB1-L	7.62	13.97
2545R-06GB1-L	10.16	16.51
2545R-07GB1-L	12.70	19.05
2545R-08GB1-L	15.24	21.59
2545R-09GB1-L	17.78	24.13
2545R-10GB1-L	20.32	26.67
2545R-11GB1-L	22.86	29.21
2545R-12GB1-L	27.94	34.29

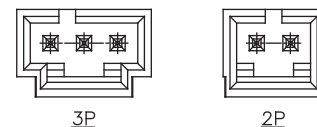
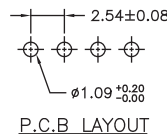
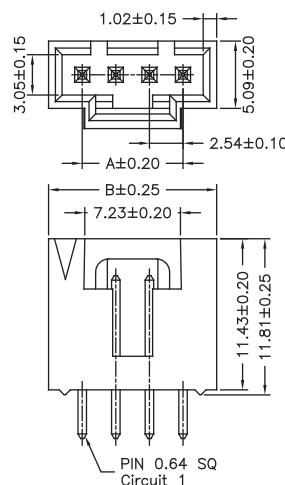


Part No.:2545R-XXGB1-L

Specifications

Current Rating: 3A AC,DC
 Voltage Rating: 250V AC,DC
 Temperature Range: -25°C to +85°C
 Contact Resistance: 20mΩ Max.
 Insulation Resistance: 1000MΩ Min.
 Withstanding Voltage: 1500V AC/minute
 Terminal: Brass / Gold Plated
 Material: PBT,UL94V-0

Part No.	Dimensions	
	A	B
2545S-03GB-L	2.54	10.17
2545S-04GB-L	5.08	12.71
2545S-05GB-L	7.62	15.25
2545S-06GB-L	10.16	17.79
2545S-07GB-L	12.70	20.33
2545S-08GB-L	15.24	22.87
2545S-09GB-L	17.78	25.41
2545S-10GB-L	20.32	27.95
2545S-11GB-L	22.86	30.49
2545S-12GB-L	25.40	33.03



Part No.:2545S-XXGB-L