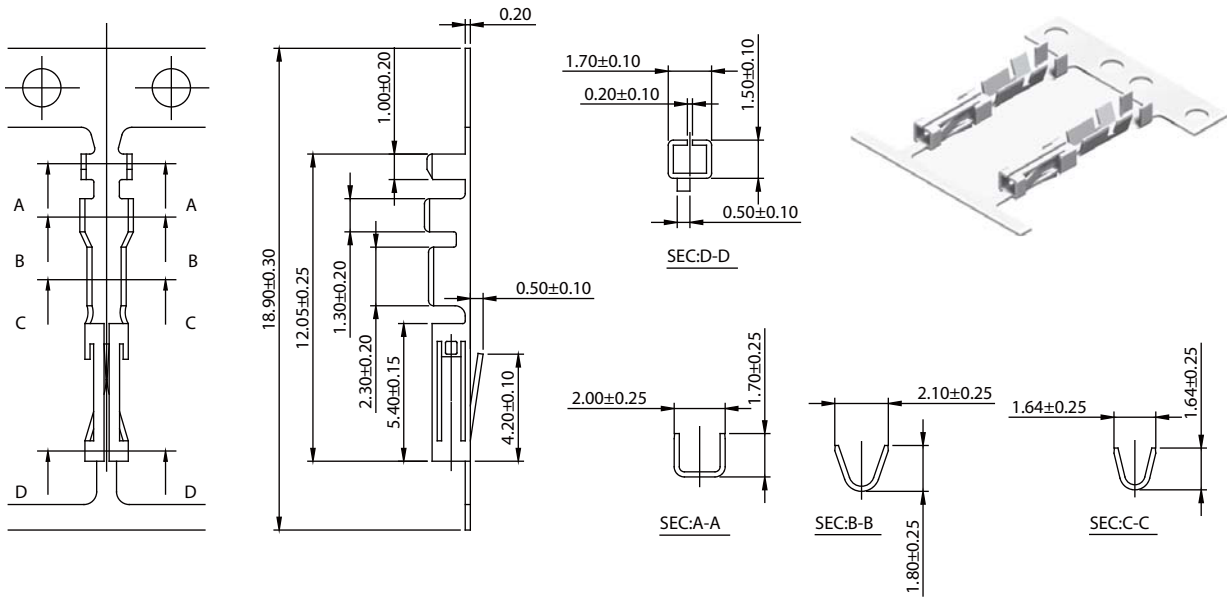




2.54mm Terminal / Housing

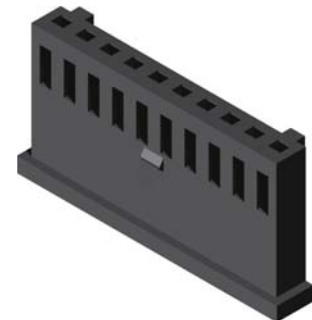
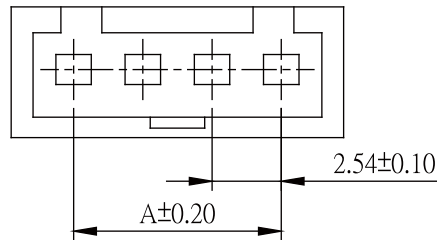


Part No.:2546-T-L

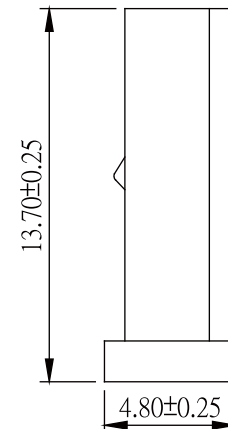
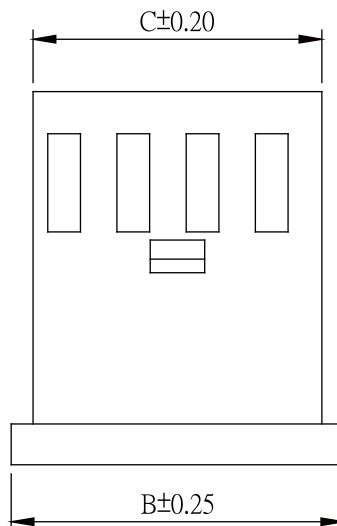
Wire Range	Insulation O. D.	Material	Finish
AWG#28-#30	1.30mm(max)	Phosphor Bronze	Tin Plated

Specifications

Current Rating: 3A AC,DC
 Voltage Rating: 250V AC,DC
 Temperature Range: -25°C to +85°C
 Contact Resistance: 20mΩ Max.
 Insulation Resistance: 1000MΩ Min.
 Withstanding Voltage: 1000V AC/minute
 Material: Nylon 66,UL94V-0



Part No.	Dimensions		
	A	B	C
2546H-02B-L	2.54	7.10	5.60
2546H-04B-L	7.62	12.20	10.60
2546H-06B-L	12.70	17.30	15.70
2546H-08B-L	17.78	22.30	20.80
2546H-09B-L	20.32	24.90	23.30
2546H-10B-L	22.86	27.40	25.90
2546H-12B-L	27.94	32.50	31.00
2546H-15B-L	35.56	40.10	38.60
2546H-22B-L	53.34	57.90	56.40



Part No.:2546H-XXB-L

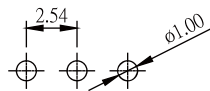


2.54mm Wafer Right Angle / Straight Type

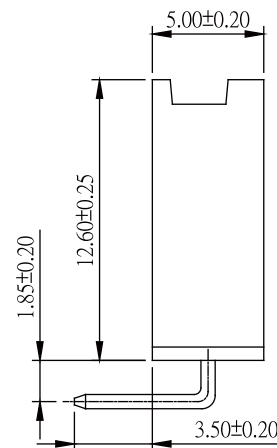
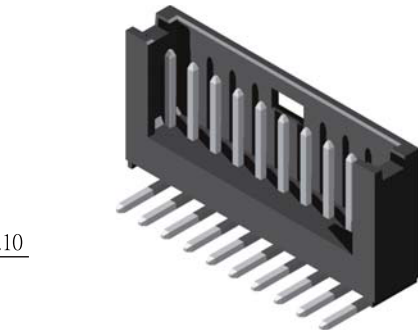
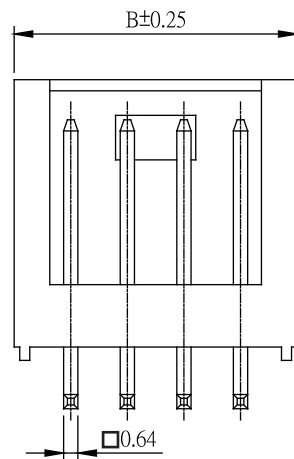
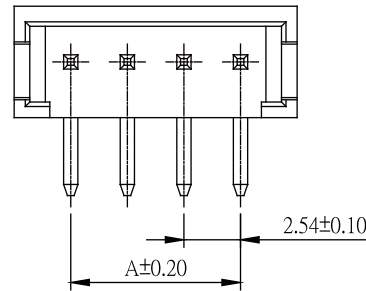
Specifications

Current Rating: 3A AC,DC
 Voltage Rating: 250V AC,DC
 Temperature Range: -25°C to +85°C
 Contact Resistance: 20mΩ Max
 Insulation Resistance: 1000MΩ Min
 Withstanding Voltage: 1000V AC/minute
 Terminal: Brass / Tin Plated
 Material: Nylon 66,UL94V-2

Part No.	Dimensions	
	A	B
2546R-02TB-L	2.54	7.70
2546R-04TB-L	7.62	12.70
2546R-06TB-L	12.70	17.80
2546R-08TB-L	17.78	22.90
2546R-09TB-L	20.32	25.40
2546R-10TB-L	22.86	28.00
2546R-12TB-L	27.94	33.10
2546R-15TB-L	35.56	40.70
2546R-22TB-L	53.34	58.50



Recommended PCB Layout
 (PCB TOLERANCE ±0.05)

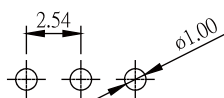


Part No.:2546R-XXTB-L

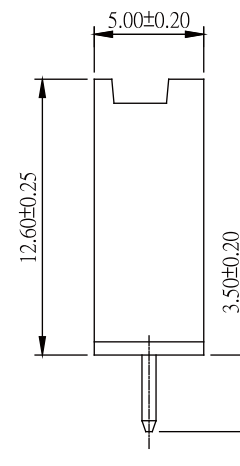
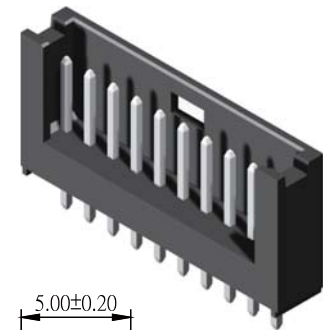
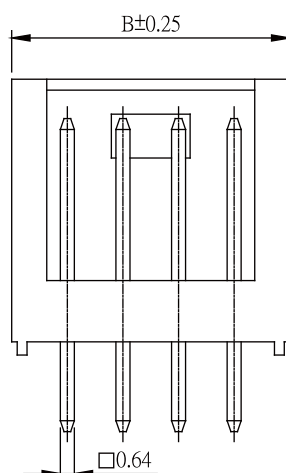
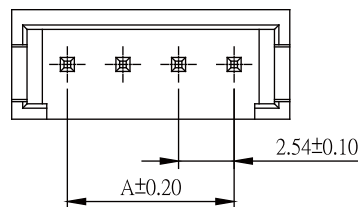
Specifications

Current Rating: 3A AC,DC
 Voltage Rating: 250V AC,DC
 Temperature Range: -25°C to +85°C
 Contact Resistance: 20mΩ Max.
 Insulation Resistance: 1000MΩ Min.
 Withstanding Voltage: 1000V AC/minute
 Terminal: Brass / Tin Plated
 Material: Nylon 66,UL94V-2

Part No.	Dimensions	
	A	B
2546S-02TB-L	2.54	7.70
2546S-04TB-L	7.62	12.70
2546S-06TB-L	12.70	17.80
2546S-08TB-L	17.78	22.90
2546S-09TB-L	20.32	25.40
2546S-10TB-L	22.86	28.00
2546S-12TB-L	27.94	33.10
2546S-15TB-L	35.56	40.70
2546S-22TB-L	53.34	58.50



Recommended PCB Layout
 (PCB TOLERANCE ±0.05)



Part No.:2546S-XXTB-L